

The Berkshire MPO Transportation Improvement Program BCHSA Meeting June 27, 2024



BRPC

Berkshire Regional Planning Commission



**Learn how to access TIP
funding for roads and
other transportation
projects**

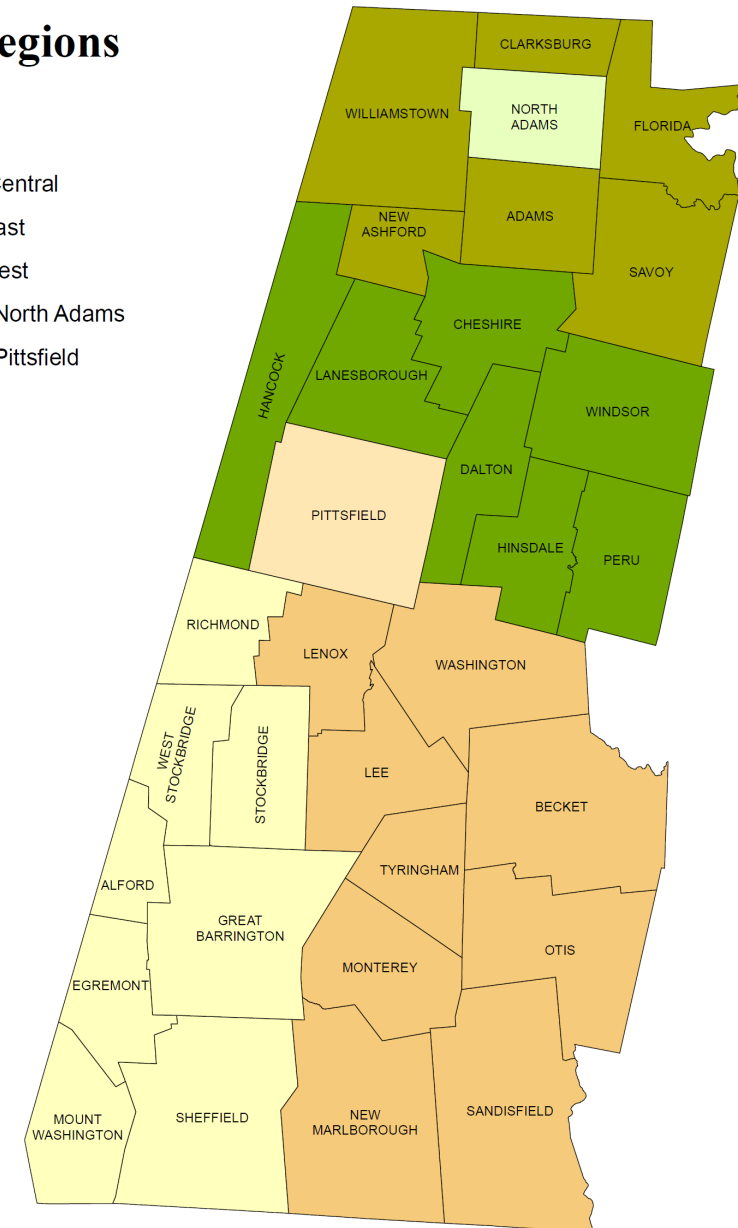
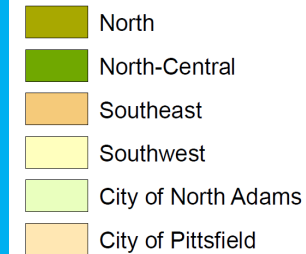
What is the Berkshire MPO?

- The Berkshire Metropolitan Planning Organization (BMPO) is a federally mandated organization responsible for conducting the federally required metropolitan transportation-planning process that is often referred to as the 3C process: continuing, cooperative, and comprehensive
- The BMPO uses this process to develop a vision for the region and then decides how to allocate federal and some state transportation funds to programs and projects – roadway, bridges, transit, bicycle, and pedestrian – which support the vision shared by all 32 cities and towns in Berkshire County
- The work of the BMPO is conducted by the Berkshire Regional Planning Commission staff under the direction of the BMPO

Berkshire MPO Members

- **Berkshire MPO presently consists of ten members:**
 - **MassDOT, Secretary and CEO**
 - **MassDOT Highway Division, Administrator**
 - **BRPC, Chair**
 - **BRTA, Administrator**
 - **City of Pittsfield, Mayor**
 - **City of North Adams, Mayor**
 - **North Towns Representative**
 - **North Central Towns Representative**
 - **Southeast Towns Representative**
 - **Southwest Towns Representative**
- **The Berkshire MPO has also established the Transportation Advisory Committee (TAC) which serves as a standing advisory committee that provides for the involvement of local government officials, transportation professionals and other representatives of transportation providers, user groups, and other relevant interests.**

Berkshire MPO Sub-Regions



What is the TIP?

- The TIP is a prioritized, multi-year capital improvement plan for the implementation of federally funded transportation improvement projects in a region
- Federal regulations require MPOs to develop a TIP document each year through a continuous, cooperative and comprehensive (3C) metropolitan transportation planning process in conformance with various applicable Federal laws and regulations
- A transportation improvement project is not eligible for federal funding unless it is listed on the TIP

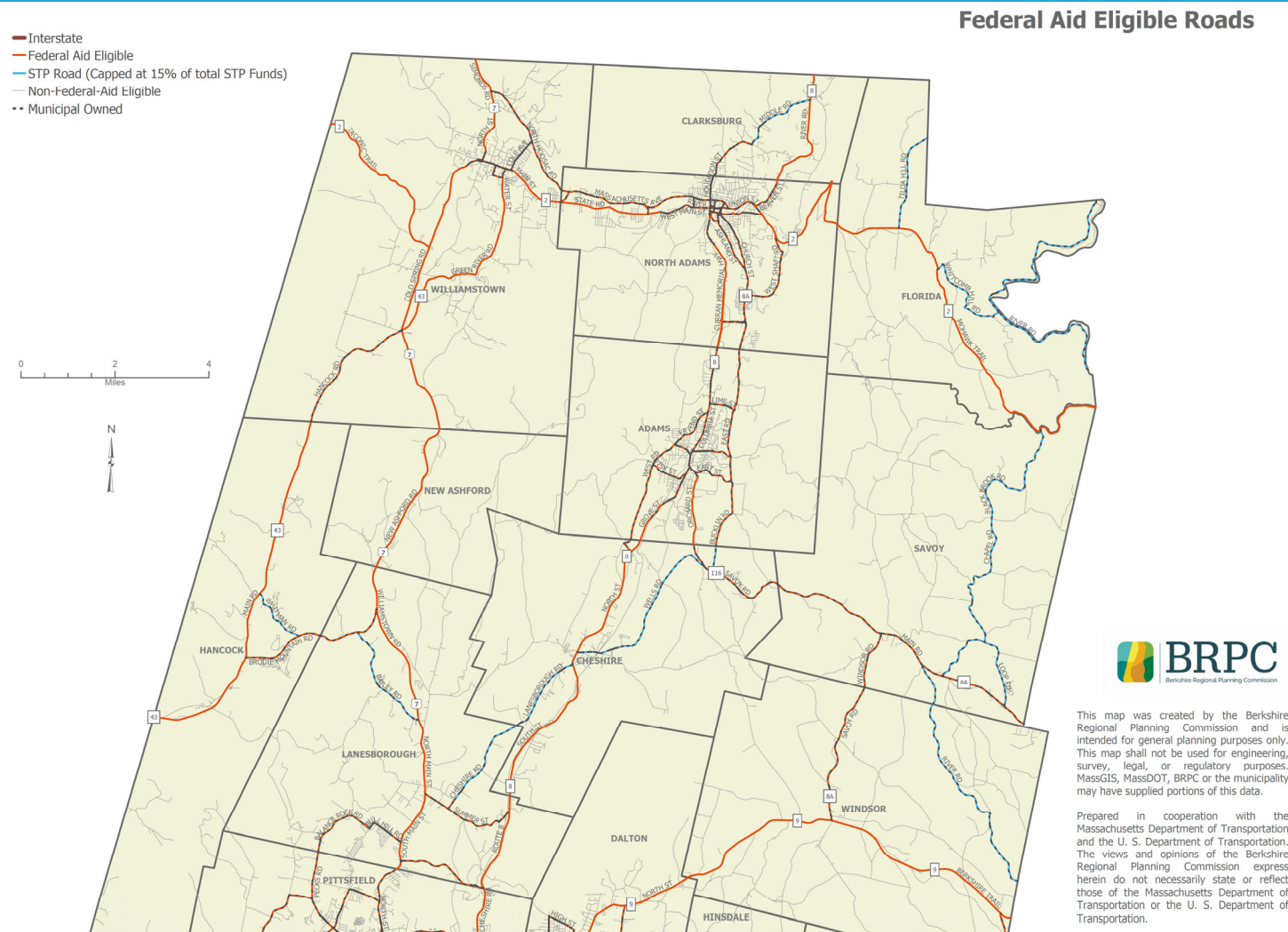
Funding Programs

- **STBG**: Surface Transportation Block Grant Program
- **HSIP**: Highway Safety Improvement Program
- **CMAQ**: Congestion Mitigation & Air Quality Improvement Program
- **NHS**: National Highway System
- **BR**: Bridge Program
- **NHPP**: National Highway Performance Program
- **NHFP**: National Highway Freight Program
- **TAP**: Transportation Alternatives program

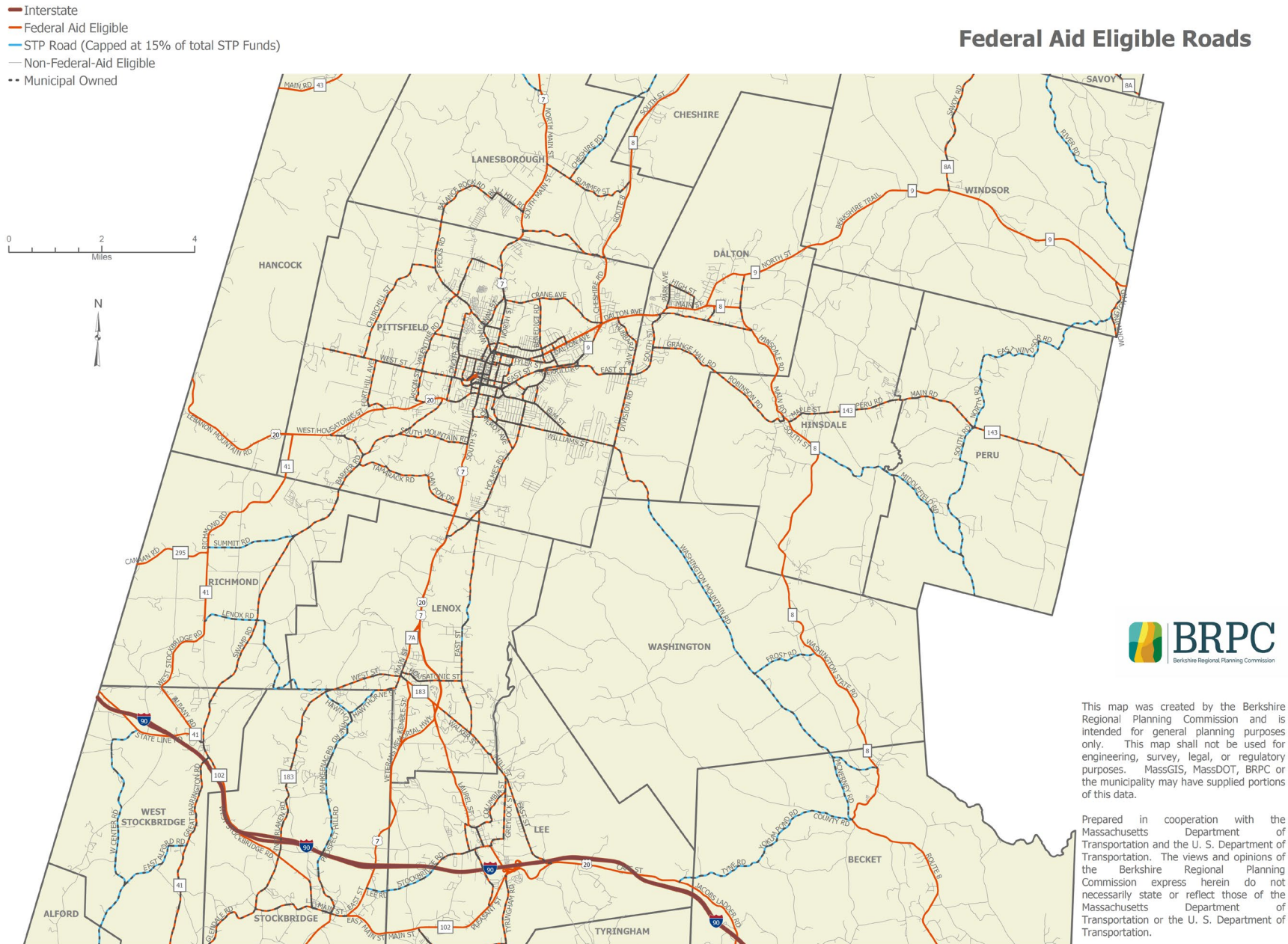
Federal Aid Eligible Roadways

- Rural Major Collector or higher for TIP
- Federal Functional Classification
 - Interstate (Yes)
 - Principal Arterial (Yes)
 - Minor Arterial (Yes)
 - Major Collector (Yes)
 - **Minor Collector** (case by case basis, projects can only make up 15% of statewide funding)
 - Local (No)

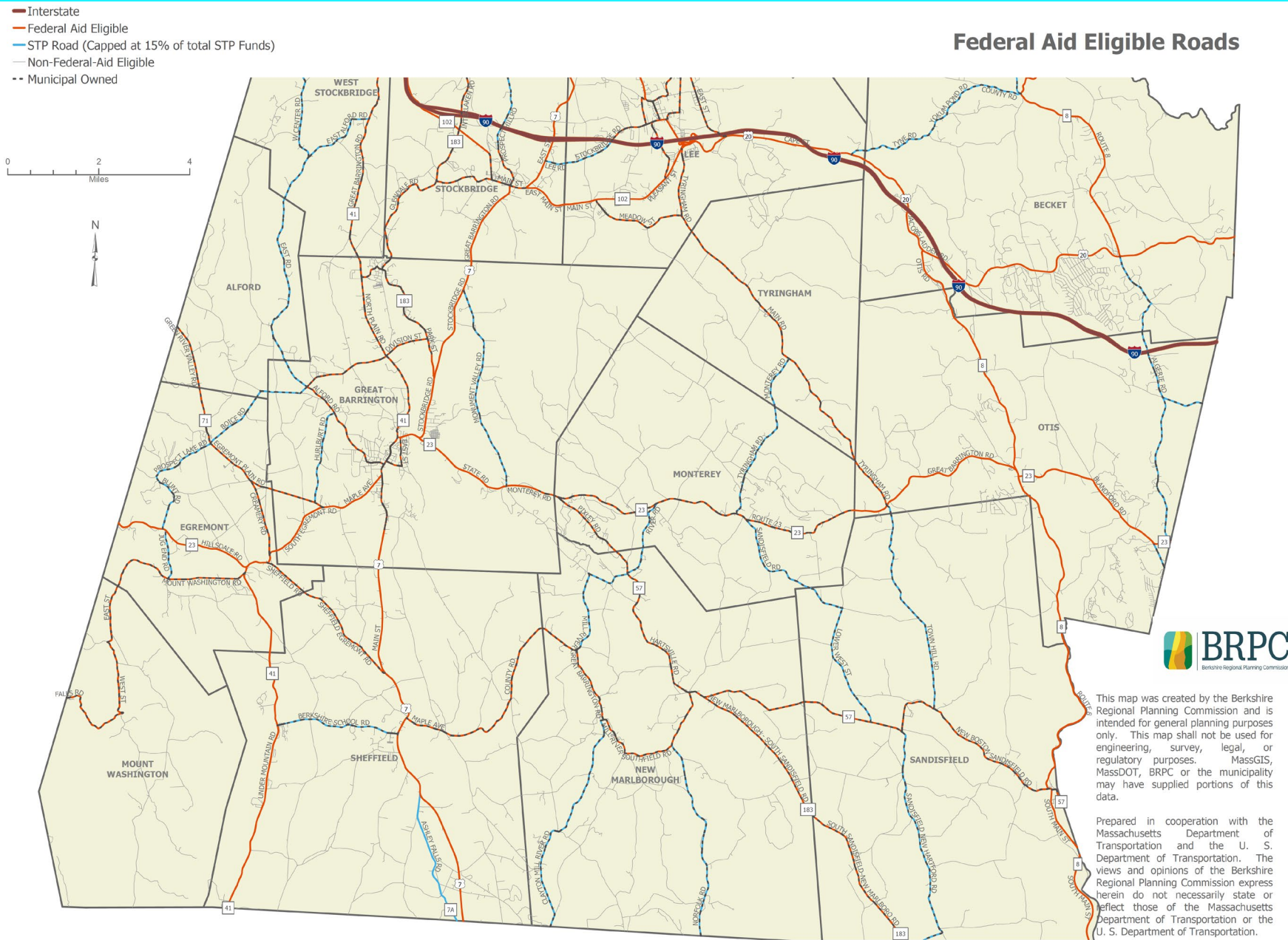
Berkshire County - North



Berkshire County - Central



Berkshire County - South



Advancing Projects through the TIP Process

- Project Initiation (PNF-PIF) and Preliminary Discussions with MassDOT and BRPC (need to determine if project is a suitable TIP candidate, will MPO support it? Does it implement transportation improvements?)
- Approval by MassDOT's Project Review Committee (PRC)
- Eligibility Letter from MassDOT to Municipality (municipality needs to identify Design funding)
- TIP Project Evaluation & Prioritization (BRPC/MassDOT/MPO)
- TIP Programming should guide municipality on when to begin Design (recommend not spending any design \$ before PRC approval and TIP programming determination)

TIP Project Development Steps

1

- Problem/Need/Opportunity Identification

2

- Planning

3

- Project Initiation

4

- Environmental/Design/ROW Process

5

- Programming

6

- Procurement

7

- Construction

8

- Project Assessment

Step 1: Problem/Need/Opportunity Identification



Step 2: Planning

Likely Planning Approaches for Different Types of Projects

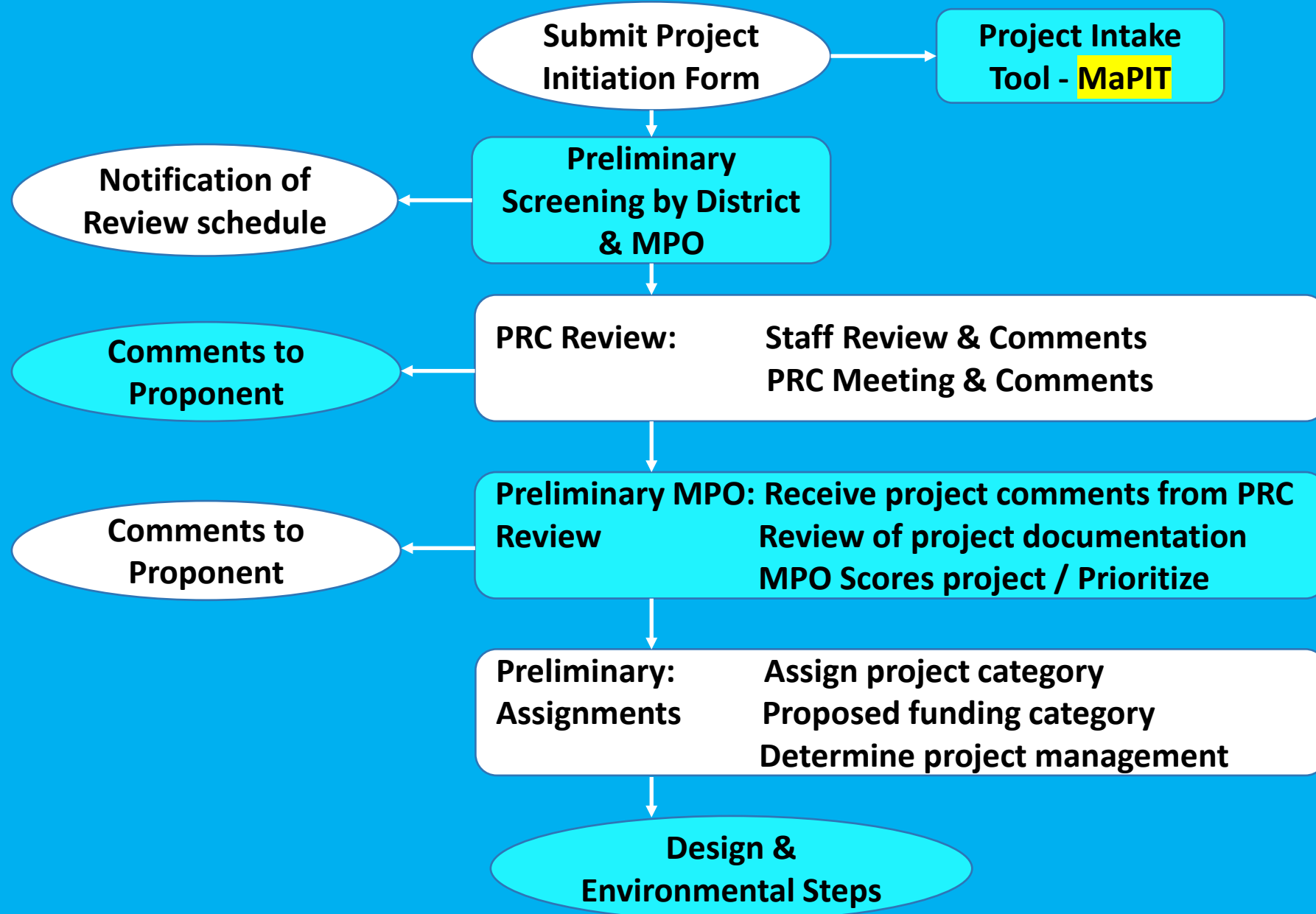
	Likely Planning Approach		
	Project Need Form	Project Planning Focused on a Clear and Feasible Solution and Minor Variants	Full Alternatives Analysis
System Preservation			
<i>Roadways, Sidewalks, and Multiuse Paths</i>			
Maintenance	▲		
Resurfacing	▲		
Reconstruction/Reconfiguration within Existing Pavement	▲	•	
<i>Bridges</i>			
Maintenance	▲		
Rehabilitation	▲		
Replacement	▲	•	
System Improvement or Expansion			
New Roadway or Multiuse Path	▲	▲	•
Widened Roadway, Sidewalk or Addition or Multiuse Path Widening	▲	•	•
Intersection, Roundabout, or Traffic Signal Modification	▲	•	
New Interchange or Interchange Reconfiguration	▲		▲
Median, Roadside Safety, or Signage Improvements	▲	•	
Traffic Calming, Streetscape, Lighting, or Transit Enhancements	▲	▲	•
New or Widened Bridge	▲	▲	•
New or Expanded TDM/Park-and-Ride Lot	▲	•	
New or Expanded Traffic Management System	▲	•	

▲ Required

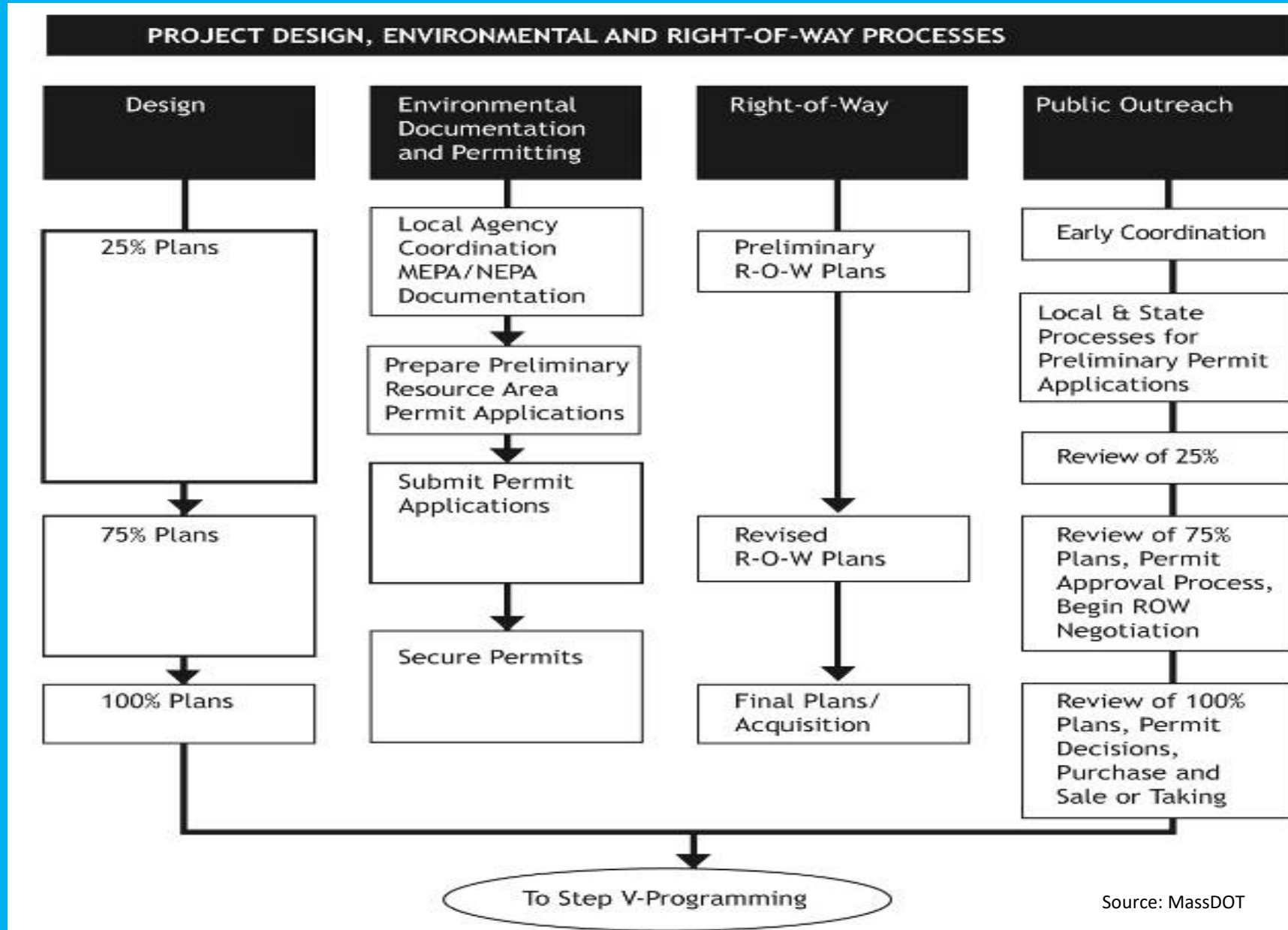
• Suggested for projects categories indicated and required for more complex projects with each category

Source: MassDOT

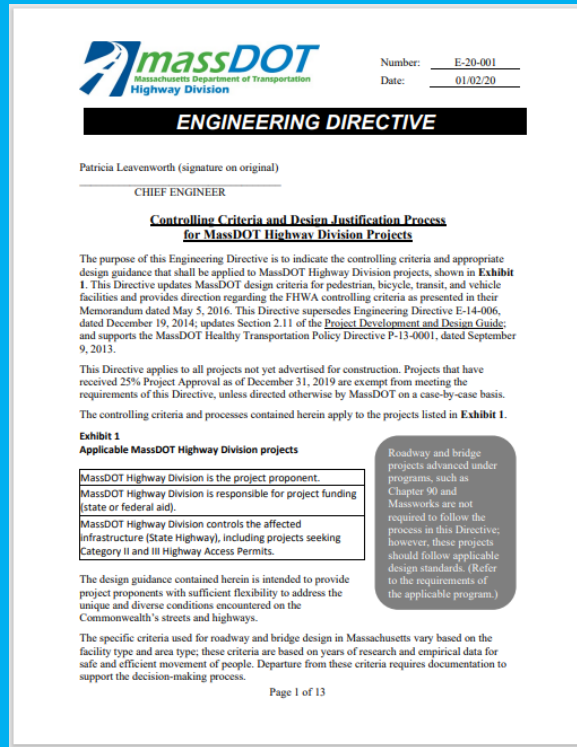
Step 3: Project Initiation



Step 4: Project Design, Environmental & ROW Process



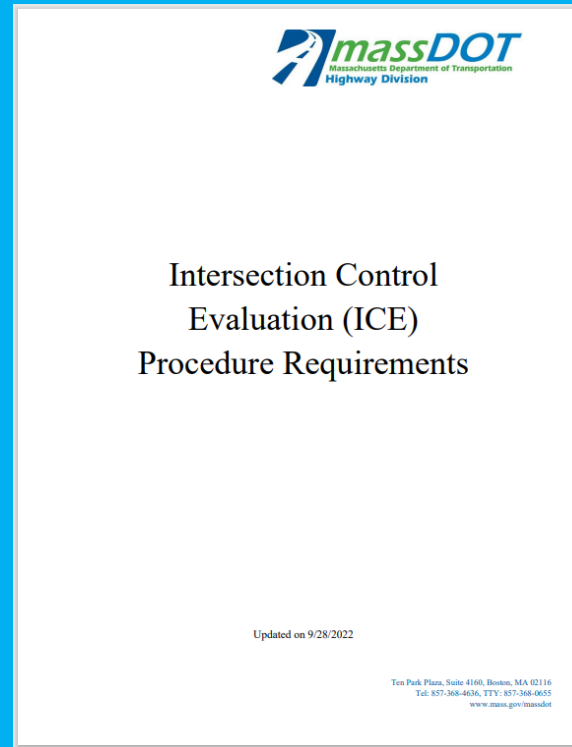
Federal Highway and MassDOT Design Requirements



MassDOT Engineering Directive E-20-001

MassDOT “Complete Streets” requirements for projects seeking Federal and/or State funding for construction.

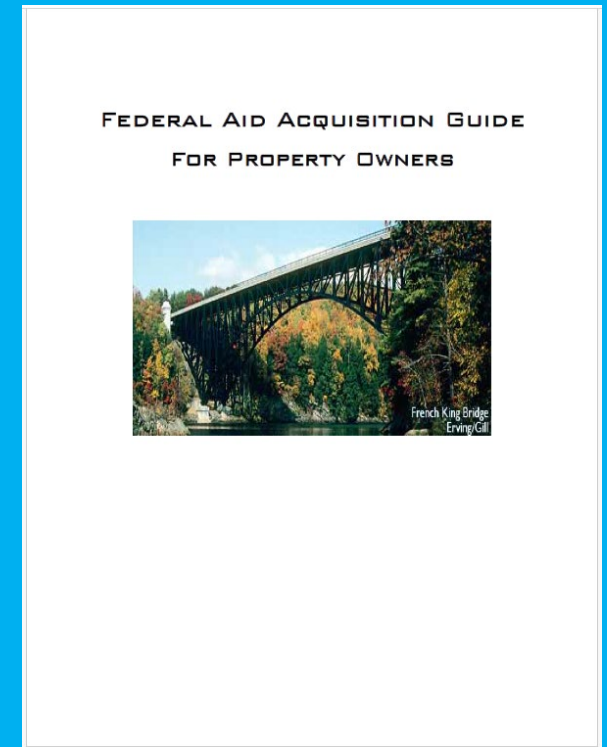
(effective 01/02/20)



Intersection Control Evaluation “ICE” Requirements

Proponents must consider multiple context-sensitive intersection control strategies to achieve long-term project value.

(effective 03/31/21)



Federal Aid Acquisition Guide for Property Owners

Prescribes the land acquisition process for public projects funded partially or wholly with federal funds.

(revised 2022)

Transportation *Improvement* Program



◀ **Intersection Improvement**
(capacity, congestion, safety)
Adams Roundabout – completed 2016

Shared-Use Path ▶
(new multi-modal connection)
*Williamstown Mohican Recreational Path
completed 2023*



◀ **Major Reconstruction**
(comprehensive roadway project,
accommodates all users)
Great Barrington Main St. – completed 2016

Step 5: Programming — (TIP Document Development Process)

1

- TIP Project Solicitation (First week of Jan)

2

- Receive Financial Targets from MassDOT (Feb-Mar)

3

- Project Evaluation by BRPC & MassDOT Staff (Feb)

4

- MPO & TAC discussion on Project Evaluation Scores & Draft TIP listing (Feb-Apr)

5

- TAC Recommendation to MPO on Draft TIP listing (Mar-Apr)

6

- MPO release Draft TIP for Public Comment (Apr-May)

7

- MPO approval of TIP; Publish & Distribute TIP (May-Jun)

8

- Federal Agencies Review and Determination Conformity (Jul-Aug)

TIP Project Evaluation

- **Highway Projects** (MPO - BRPC & MassDOT staff)
- **Intersection Improvements** (MPO - BRPC & MassDOT staff)
- **Bike/ Ped Projects** (MassDOT Planning, Boston)
- **Bridges** (MassDOT Planning, Boston)
- **Transit** (MassDOT Rail & Trail, Boston)

TIP Project Evaluation (8 Criteria)

- **Road Condition**: 1 Point (Project will construct, or will strengthen pavement structure (not surface only) of existing road or will improve sub-standard or poorly functioning drainage)
- **Mobility**: 1 Point (Project will reduce vehicle delay at intersections (LOS C or worse) and/or improve through lane(s) capacity along a corridor)
- **Regional Connectivity**: 1 Point (Improves Principal Arterial, or Minor Arterial/ Collector with no alternative route)
- **Goods Movement**: 1 Point (Project will make geometric improvements at intersections or along a corridor to facilitate truck movement (3 axle ADT > 50))

TIP Project Evaluation (8 Criteria)

- **Safety**: 1 Point (Improves safety at location where accident rate exceeds the state average)
- **Environment**: 1 Point (Project has positive (not neutral) effect on water quality, wildlife, or other natural features)
- **GHG Emissions**: 1 Point (Project has positive (not neutral) effect on GHG emissions reduction/ air quality)
- **Livability**: 1 Point (Meets at least two of these standards: Supports economic development, increase use of alternate modes, or benefits defined EJ populations)

FFY 2025-2029 TIP Projects Evaluation

Project ID	Project	Town/City	Road Condition	Mobility	Reg. Connectivity	Goods Movement	Safety	Environment	GHG Emissions	Livability	Total Project Score	Project Cost	Project Design Status (MassDOT)	CMAQ Eligible	HSIP Eligible	Most Recent PASER Rating	Programmed in FFY 2025-2029 TIP
			Project will construct new road, or will strengthen pavement structure (not surface only) of existing road or will improve sub-standard or poorly functioning drainage.	Project will reduce vehicle delay at intersections (LOS C or worse) and/or improve through lane(s) capacity along a corridor.	Improves Principal Arterial, or minor arterial/collector with no alternate route.	Project will make geometric improvements at intersections or along a corridor to facilitate truck movement (3 axle ADT greater than 50).	Improves safety at location where accident rate exceeds the State average.	Project has positive (not neutral) effect on water quality, wildlife, or other natural features.	Project has positive (not neutral) effect on GHG emissions reduction/ air quality.	Meets at least two of these standards: Supports economic development, increase use of alternate modes, or benefits defined EJ populations.							
604003	EAST STREET (LYMAN ST TO MERRILL RD)	PITTSFIELD	1	1	1	1	0	0	1	1	6	\$10,423,290	75%			5	2024
608737	DALTON DIVISION ROAD	DALTON	1	0	1	1	1	0	1	1	6	\$14,214,440	<25%	√		6	2029 & 2030
608768	MERRILL ROAD (ROUTE 9)	PITTSFIELD	1	0	1	1	1	0	1	1	6	\$15,059,375	25%		√	4	2028 & 2029
609292	EAST STREET (LYMAN ST TO ELM ST)	PITTSFIELD	1	0	1	1	1	0	1	1	6	\$6,823,275	<25%	√	√	4	2027
609277	ASHLAND STREET	NORTH ADAMS	1	1	0	1	1	0	1	1	6	\$10,834,263	100%	√		5	2025 & 2026
611970	ROUTE 20 (MAIN ST, PARK ST) @ WEST PARK ST	LEE	0	1	1	1	1	0	1	1	6	\$3,880,875	<25%	√		NA	2026 (NHPP)
609465	ROUTE 7 & ROUTE 23	GREAT BARRINGTON	1	0	1	0	1	0	1	1	5	\$12,700,000	<25%	√		5	
609215	SOUTH MAIN STREET (ROUTE 7)	GREAT BARRINGTON	1	0	1	0	0	0	1	1	4	\$7,124,000	<25%			6	
608547	MOUNT WASHINGTON ROAD	EGREMONT	1	0	1	1	0	1	0	0	4	\$13,243,529	100%			5	2026 & 2027
613657	ROUTE 8 (HOWLAND AVENUE)	ADAMS	1	0	1	0	0	0	1	1	4	\$17,919,975	<25%	√		8	
608472	ROUTE 43	WILLIAMSTOWN	1	0	0	0	0	0	1	1	3	\$18,336,200	25%			5	
609256	ROUTE 7	LANESBOROUGH	1	0	1	0	0	0	1	0	3	\$3,400,000	<25%			7	2027 (NHPP)
613074	ROUTE 7 RETAINING WALL	WILLIAMSTOWN	1	0	1	1	0	0	0	0	3	\$3,458,138	<25%			NA	2029 (NHPP)
613053	ROUTE 20 @ PLUNKETT ST 7 BLANTYRE RD	LENOX	0	0	1	0	1	0	0	0	2	\$1,544,650	<25%		√	8	2027 (HSIP)
612691	ROUTE 7 ACCESS IMPROVEMENT AT MOUT GREYLOCK SCHOOL	WILLIAMSTOWN	0	0	1	0	0	0	0	0	1	\$600,000	<25%		√	5	2026
613093	ROUTE 7	WILLIAMSTOWN	0	0	1	0	0	0	0	0	1	\$5,255,000	<25%			5	
613677	ROUTE 8	SANDSFIELD	0	0	1	0	0	0	0	0	1	\$5,575,000	<25%			7	

TIP Regional Targets by Federal Fiscal Year

Berkshire MPO	2025	2026	2027	2028	2029
Total (STBG, CMAQ , HSIP & TAP) Annual Target	\$10,639,564	\$10,379,265	\$12,851,888	\$13,093,798	\$13,340,546

Berkshire MPO FFY 2025 – 2029 TIP Projects

\$98.6 Million

13 Highway Projects

- North Adams – Ashland St.
- Williamstown – Rt. 7 @ Mt Greylock School
- Egremont – Mt. Washington Rd.
- Lee – Route 20
- Pittsfield – Merrill Rd.
- Lanesborough – Route 7
- Adams-Cheshire – Route 8
- Lee – Park St. @ Main St.
- Lenox – Rt. 20 @ Plunkett St.
- Dalton – Dalton Division Rd.
- Pittsfield – East St (Elm to Lyman)

\$157.3 Million

24 Bridge Projects

County-Wide –
Selected based on
bridge condition rating

\$16.4 Million

2 Bike Trail Projects

- Ashuwillticook Trail Extension to Hodges Cross Rd.
- Lee Bikeway Phase 1

\$18 Million

31 Transit Projects

County-Wide

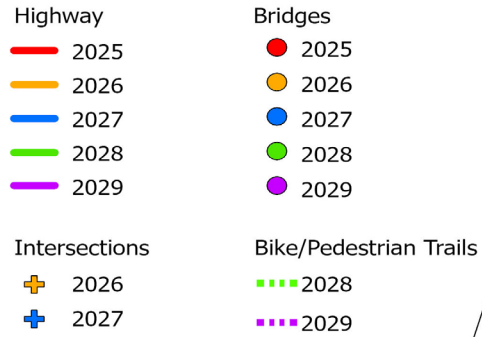
**TOTAL 70 PROJECTS -
\$290,300,000**

Berkshire MPO FFY 2025 – 2029 TIP Projects

Berkshire TIP

2025-2029

by Year

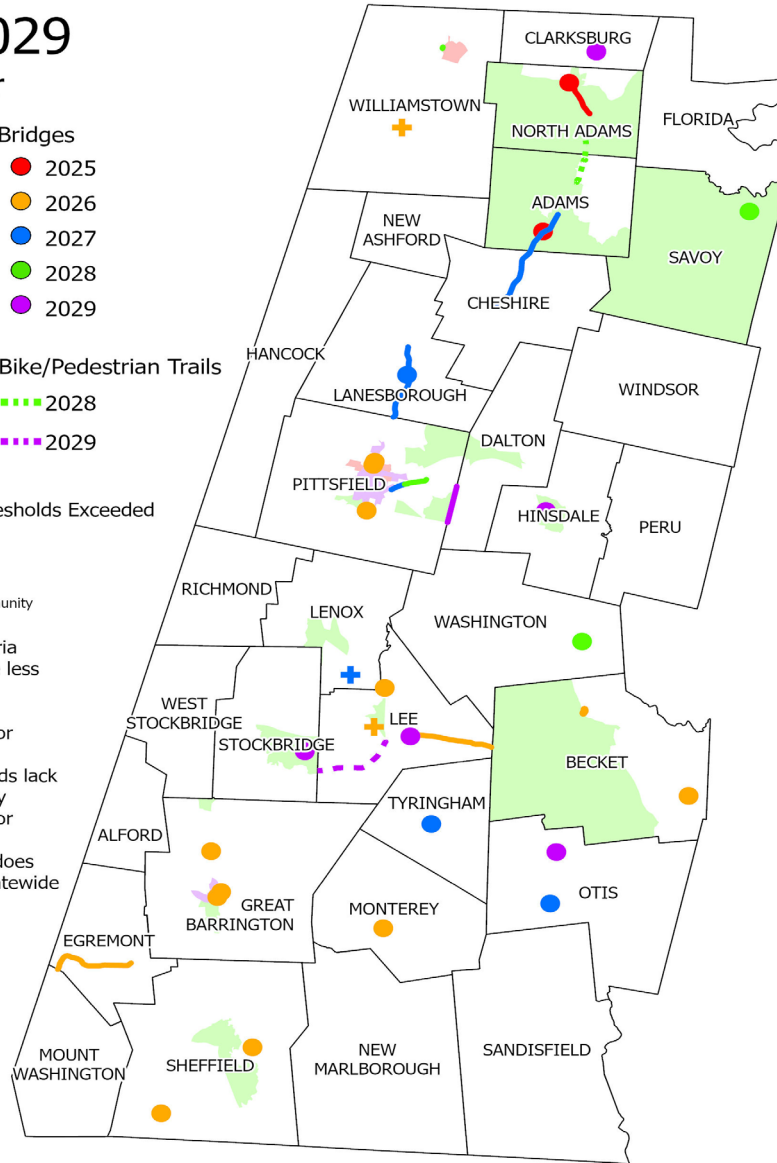


Environmental Justice Thresholds Exceeded

- No EJ Community
- Minority EJ Community
- Income EJ Community
- Minority and Income EJ Community

Environmental Justice Criteria

- Median household income less than 65% of the statewide median household income;
- Minorities comprise 40% or more of the population;
- 25% or more of households lack English language proficiency
- Minorities comprise 25% or more of the population and median household income does not exceed 150% of the statewide median household income.



TIP Projects Funded FFY 2011-2024

TIP Projects by Community

This map highlights communities where TIP projects were programmed from FFY2011-2024. For specific information on the projects, please see the tables on the following page.

Project Type

- Bike
- Bridge
- Highway

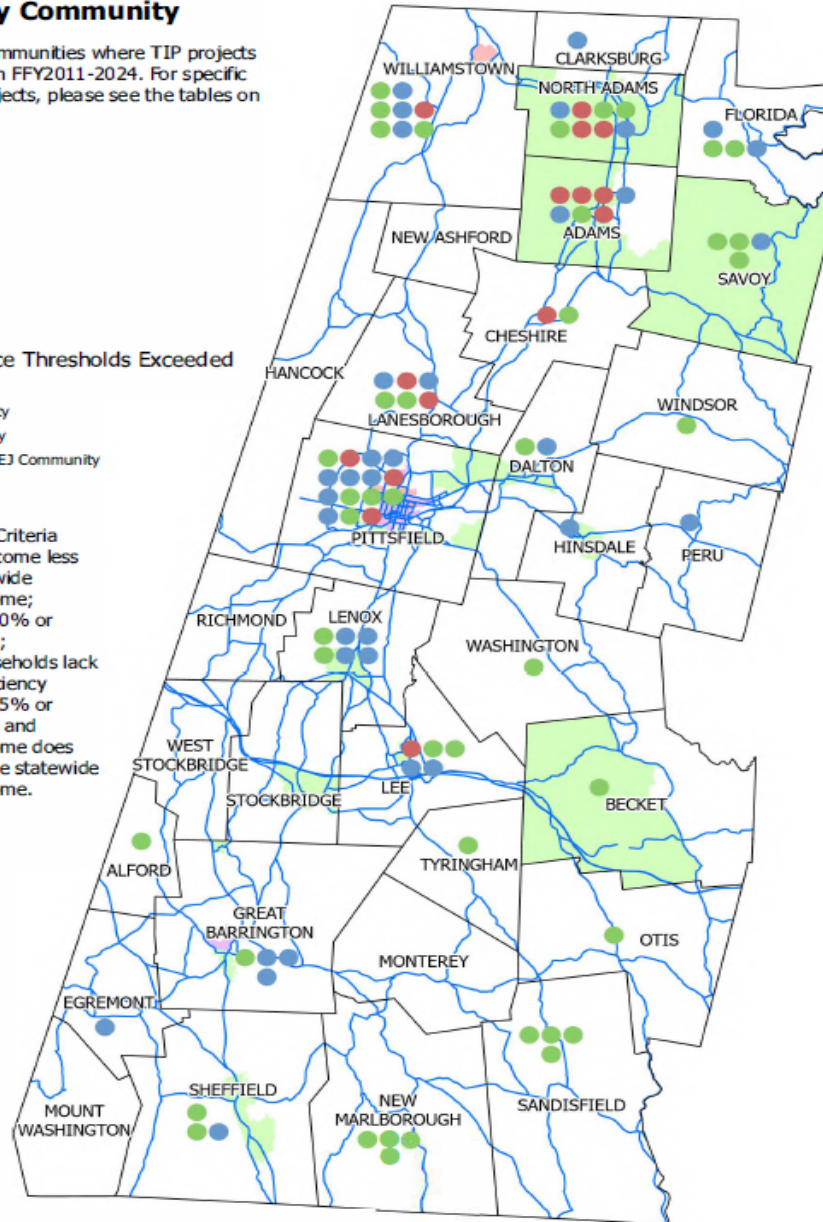
BlockGroup

Environmental Justice Thresholds Exceeded

- No EJ Community
- Minority EJ Community
- Income EJ Community
- Minority and Income EJ Community

Environmental Justice Criteria

- Median household income less than 65% of the statewide median household income;
- Minorities comprise 40% or more of the population;
- 25% or more of households lack English language proficiency
- Minorities comprise 25% or more of the population and median household income does not exceed 150% of the statewide median household income.



TIP Resources

- <http://berkshireplanning.org/initiatives/metropolitan-planning-organization-mpo>
- <https://www.mass.gov/topics/massdot-transportation-planning>
- <https://www.mass.gov/info-details/massdot-highway-initiating-a-project>
- <https://www.mass.gov/how-to/find-a-prequalified-architectural-and-engineering-firm>
- <https://geo-massdot.opendata.arcgis.com/>
- <https://www.surveymonkey.com/r/NLDMZKF>

TIP Contacts

BRPC

Anuja Koirala, AICP

Principal Transportation Planner

Berkshire Regional Planning
Commission

1 Fenn St, Suite 201

Pittsfield, MA - 01201

Ph- (413) 442-1521, Ext. 18

akoirala@berkshireplanning.org

Clete Kus, AICP

Transportation Program Manager

Berkshire Regional Planning
Commission

1 Fenn St, Suite 201

Pittsfield, MA - 01201

Ph- (413) 442-1521, Ext. 20

ckus@berkshireplanning.org

MassDOT District 1

Peter L. Frieri

Planning Engineer

MassDOT – District One

270 Main Street

Lenox, MA - 01240

Ph- (857) 368-1032

Peter.frieri@state.ma.us

Mark Moore

Project Development Engineer

MassDOT – District One

270 Main Street

Lenox, MA - 01240

Ph- (857) 368-1030

Mark.Moore@state.ma.us

Questions?