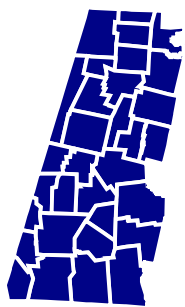


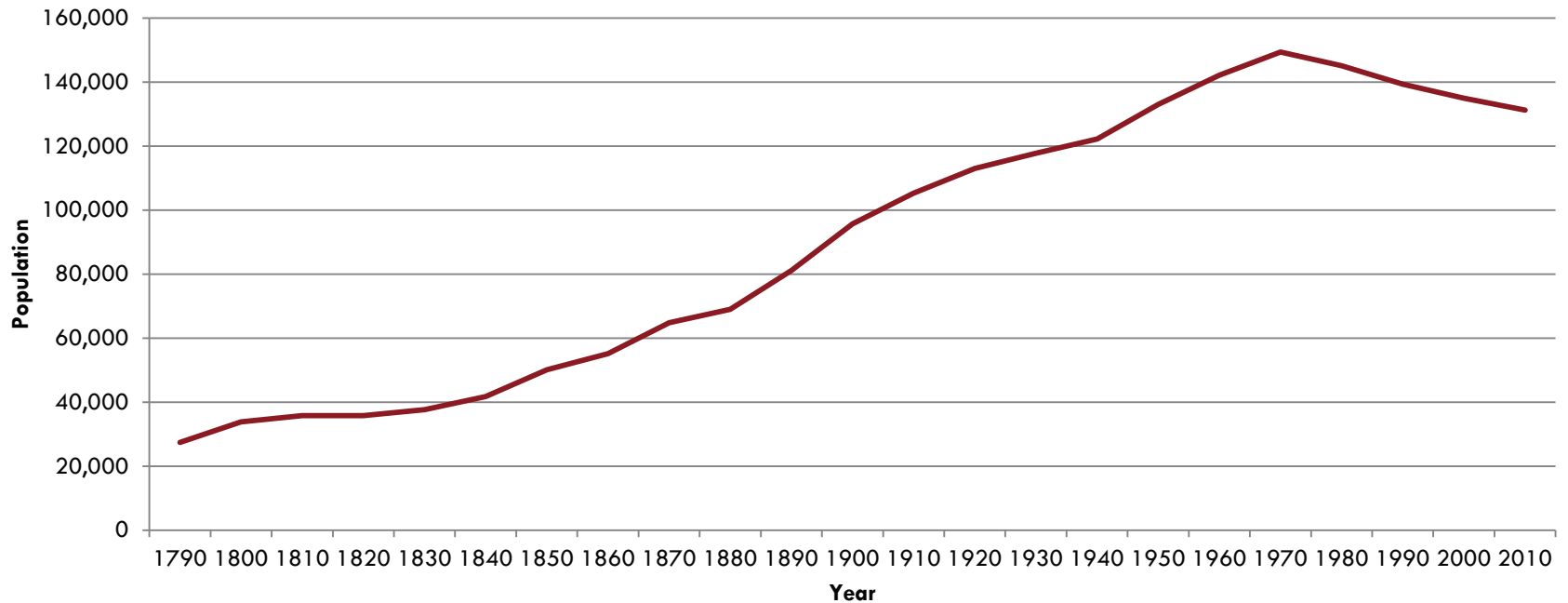
Berkshire County's Changing Population



*Berkshire
Regional
Planning
Commission*

Mark Maloy
GIS, Data & IT Manager

Population Projections



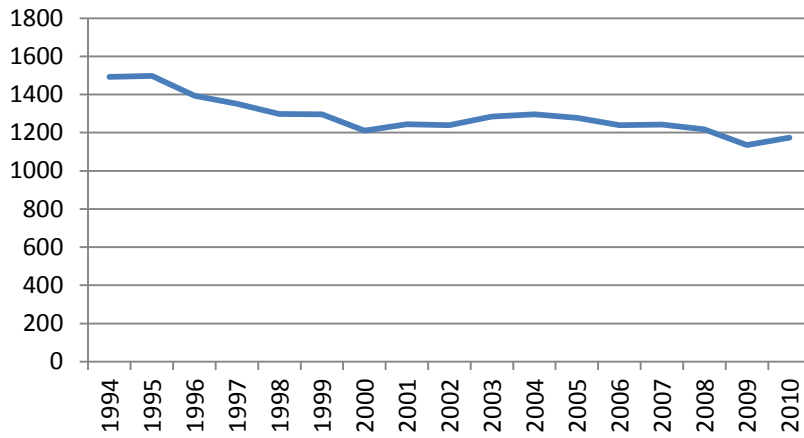
Population currently at 131,219 (2010)

Peak population was 149,402 (1970)

18,183 loss over 40 years (454/year)

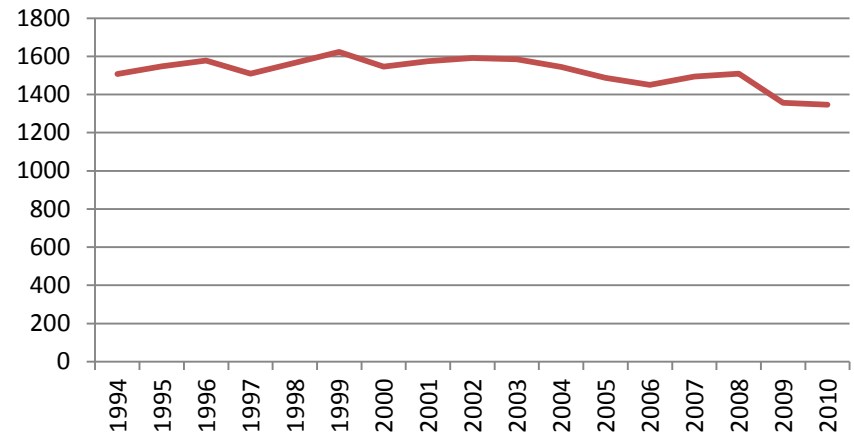
Natural Change

Births



- Average 1,288/year, but decreasing
- 1,174 in 2010

Deaths

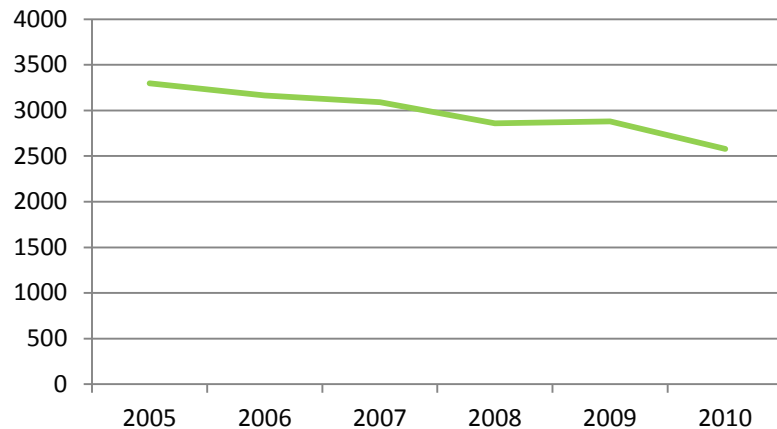


- Average 1,519/year, but relatively stable
- 1,346 in 2010

Net change of -172 in 2010

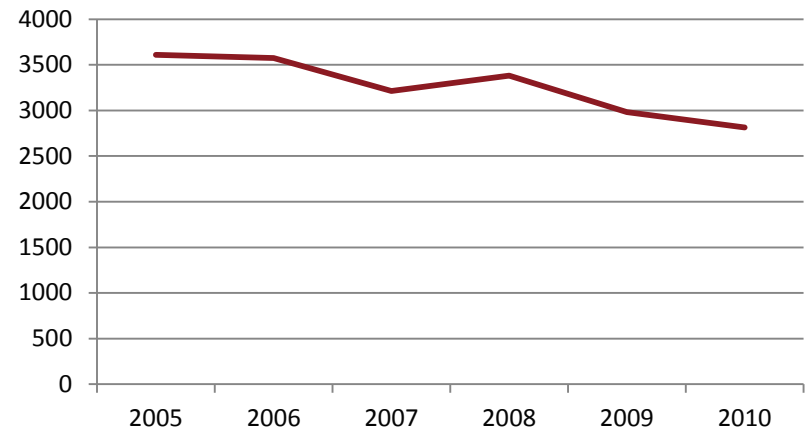
Net Migration

In-Migration



- Average of 2,977/year
- 2,577 in 2010

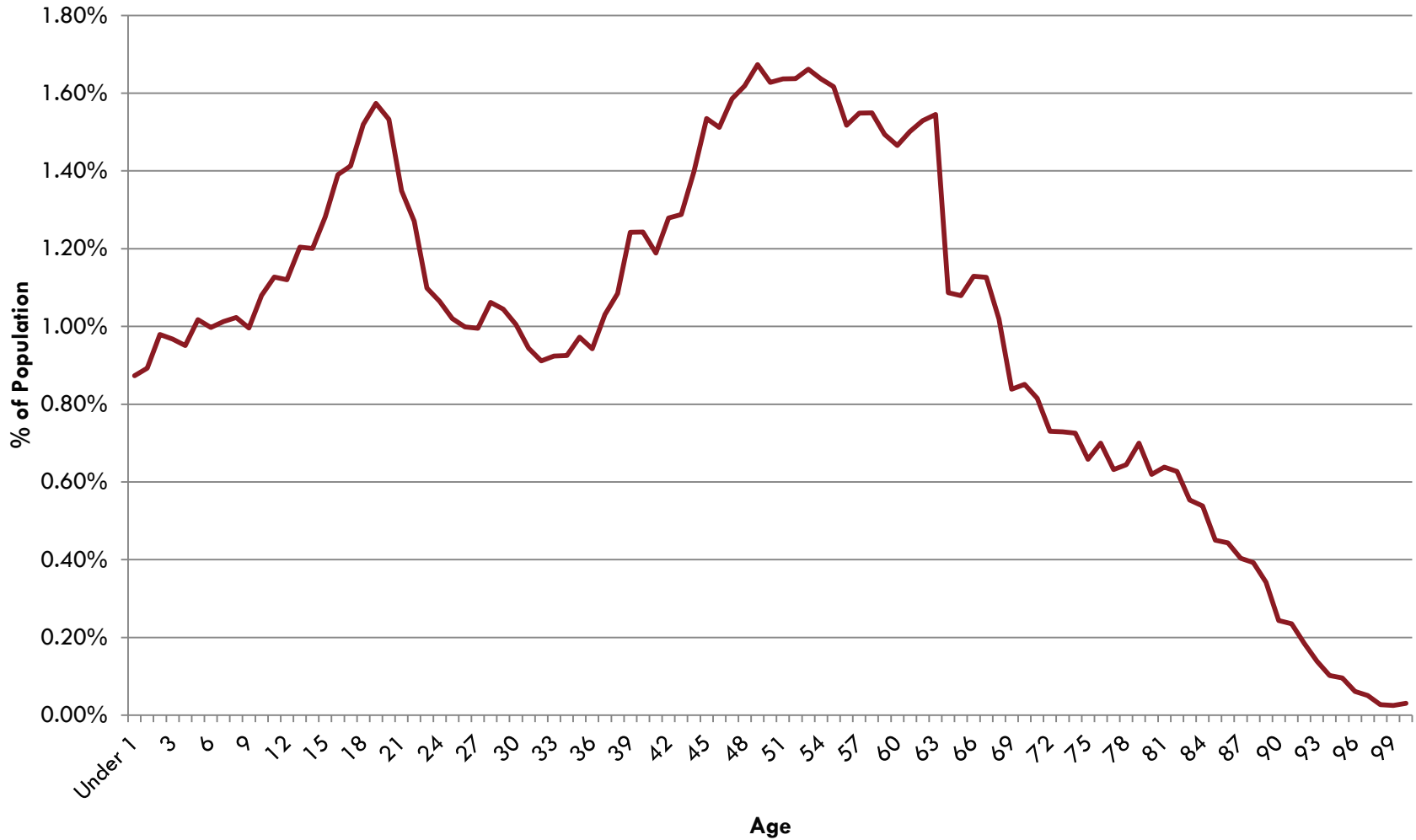
Out-Migration



- Average of 3,262/year
- 2,815 in 2010

Net change of -238 in 2010

Age Distribution



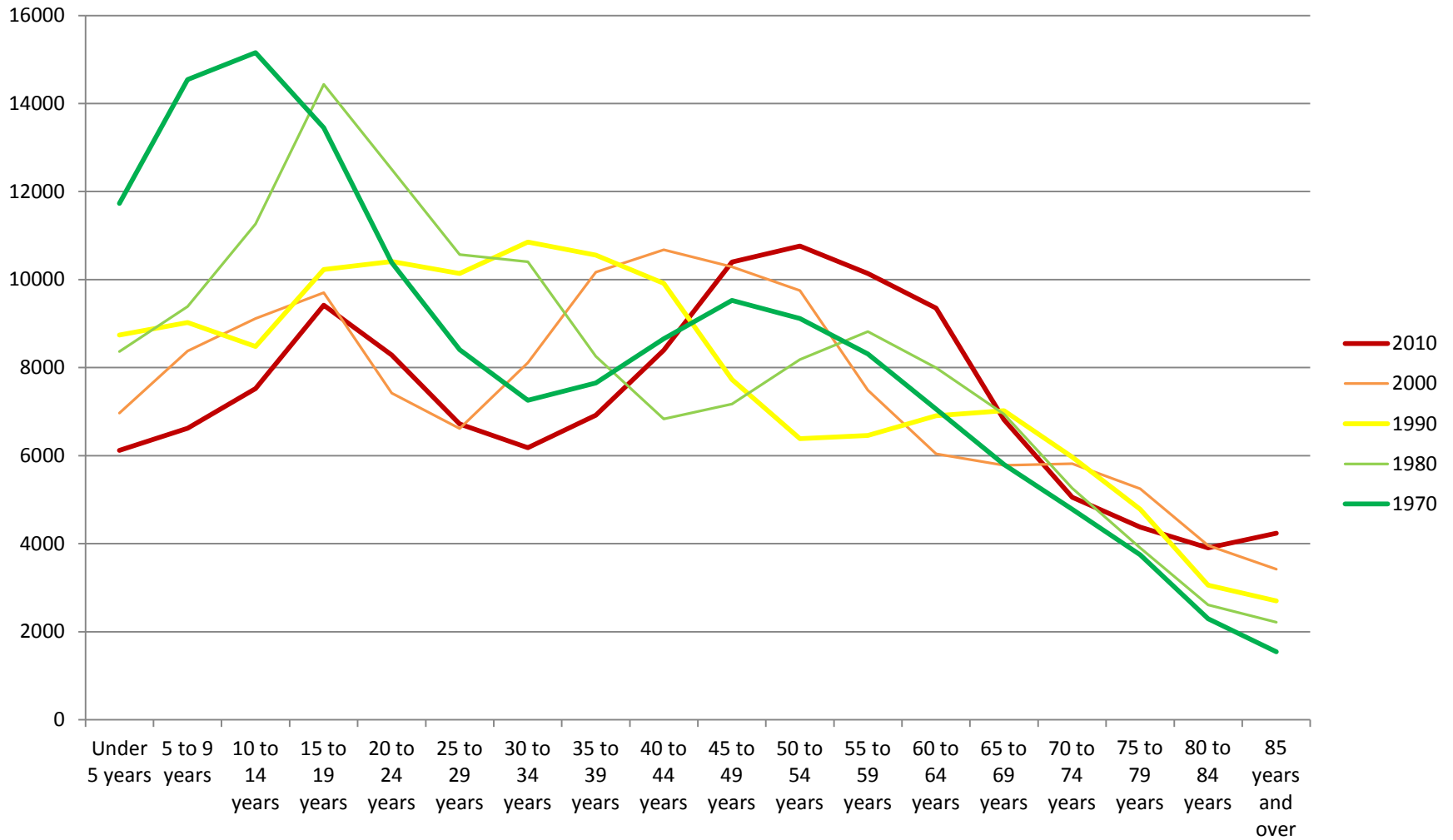
Age Distribution Comparison



What Does our Future Hold?

- Future forecast of births, deaths and net migration by age cohorts.
 - Births mostly occur late teens to late 30's
 - Deaths occur mostly after 65, but some occur throughout (rising rate from teens on)
 - Migration occurs throughout, but mostly occurs late teens (in), twenties (out), early thirties (out), late thirties (in), late sixties (out), seventies (in)

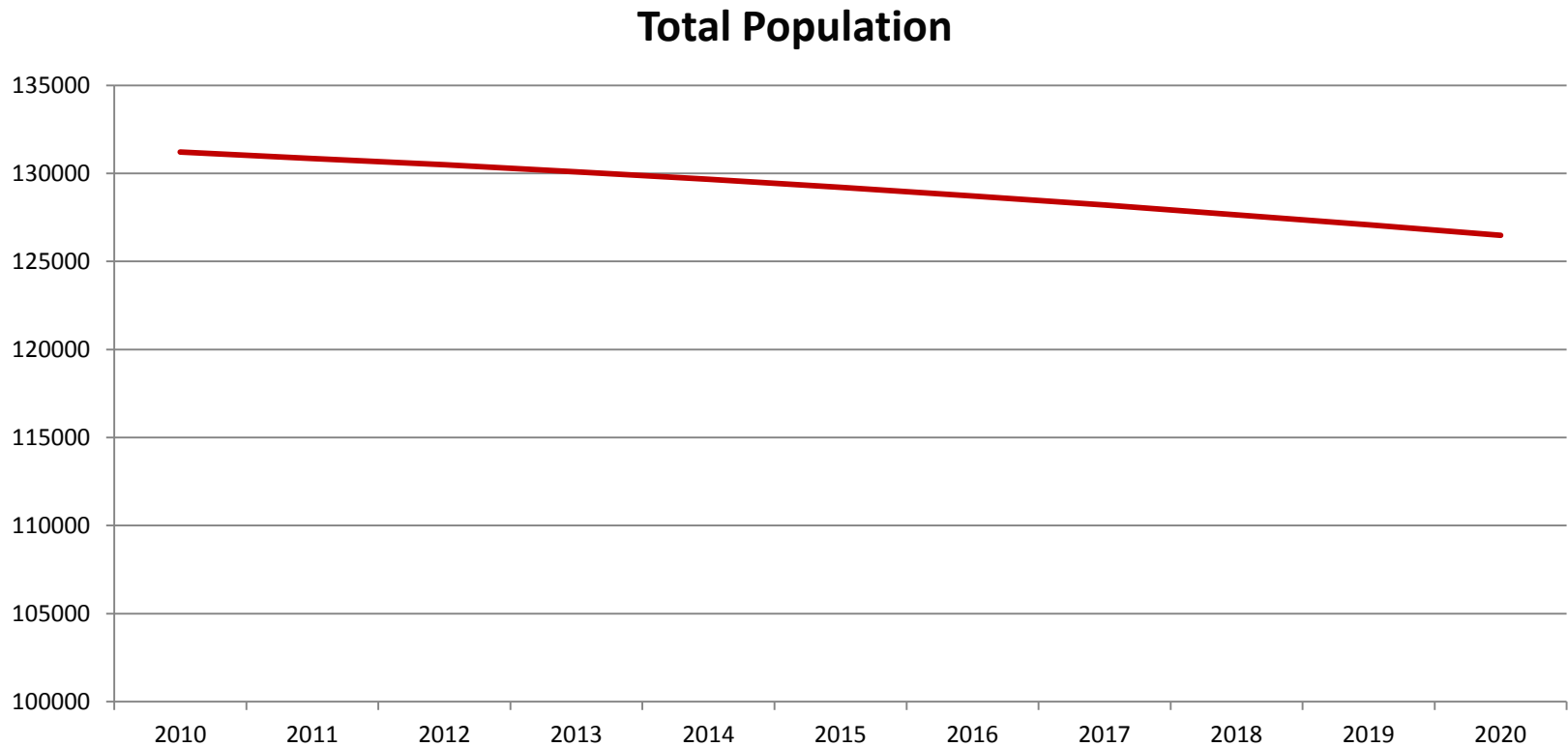
Historic Age Comparison



Caveats

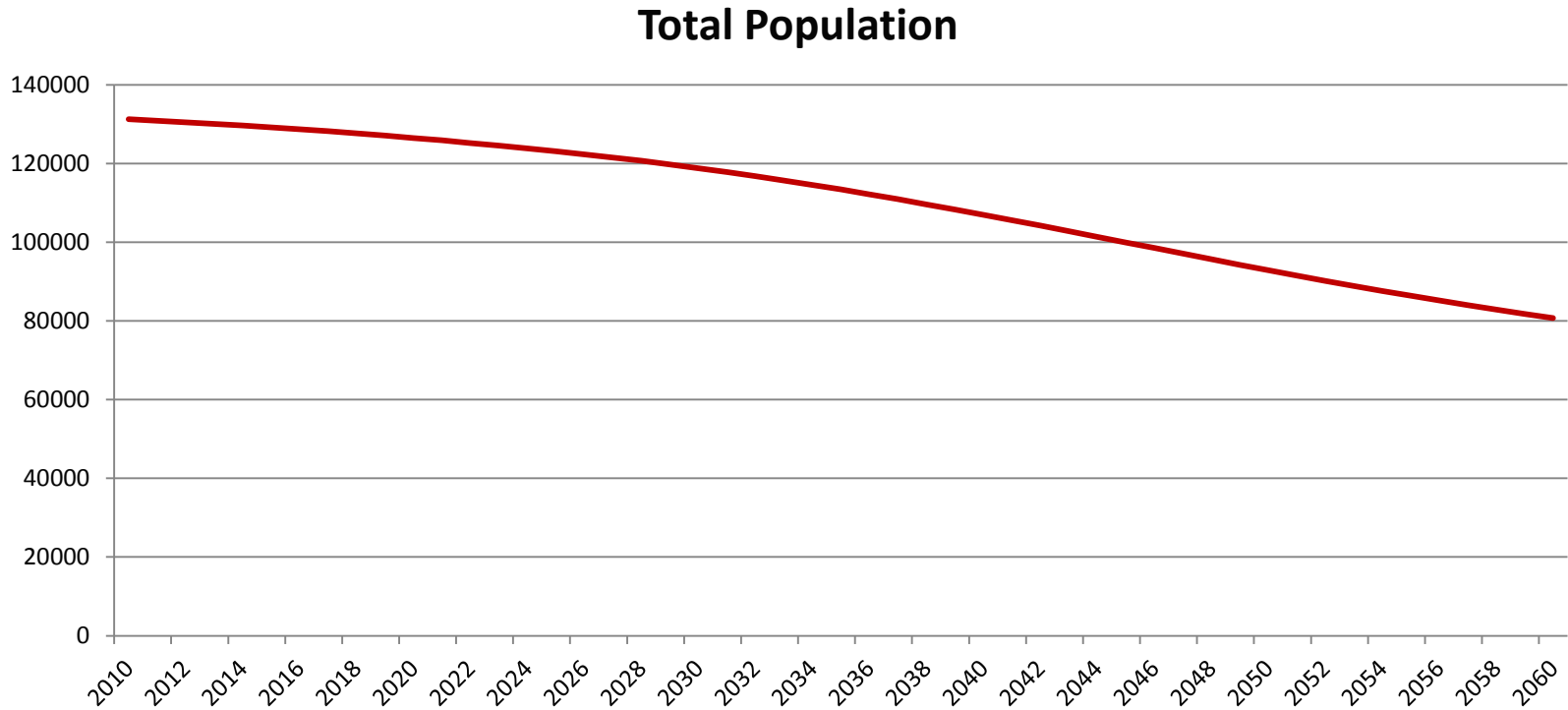
- Existing Trend Projection – if anything changes, such as migration, this projection will be wrong.
- Use this data cautiously – we are encouraging the use of this data for planning, but the focus should be on the trend and the magnitude, not the actual numbers.
- Try to use this data constructively and to begin a dialogue on the future of our region

What Does the Next 10 Years Hold?



- More of the same - continued decline
- Estimated population of 126,490 in 2020
- Loss of 4,729 since 2010

What Does the Next 50 Years Hold?

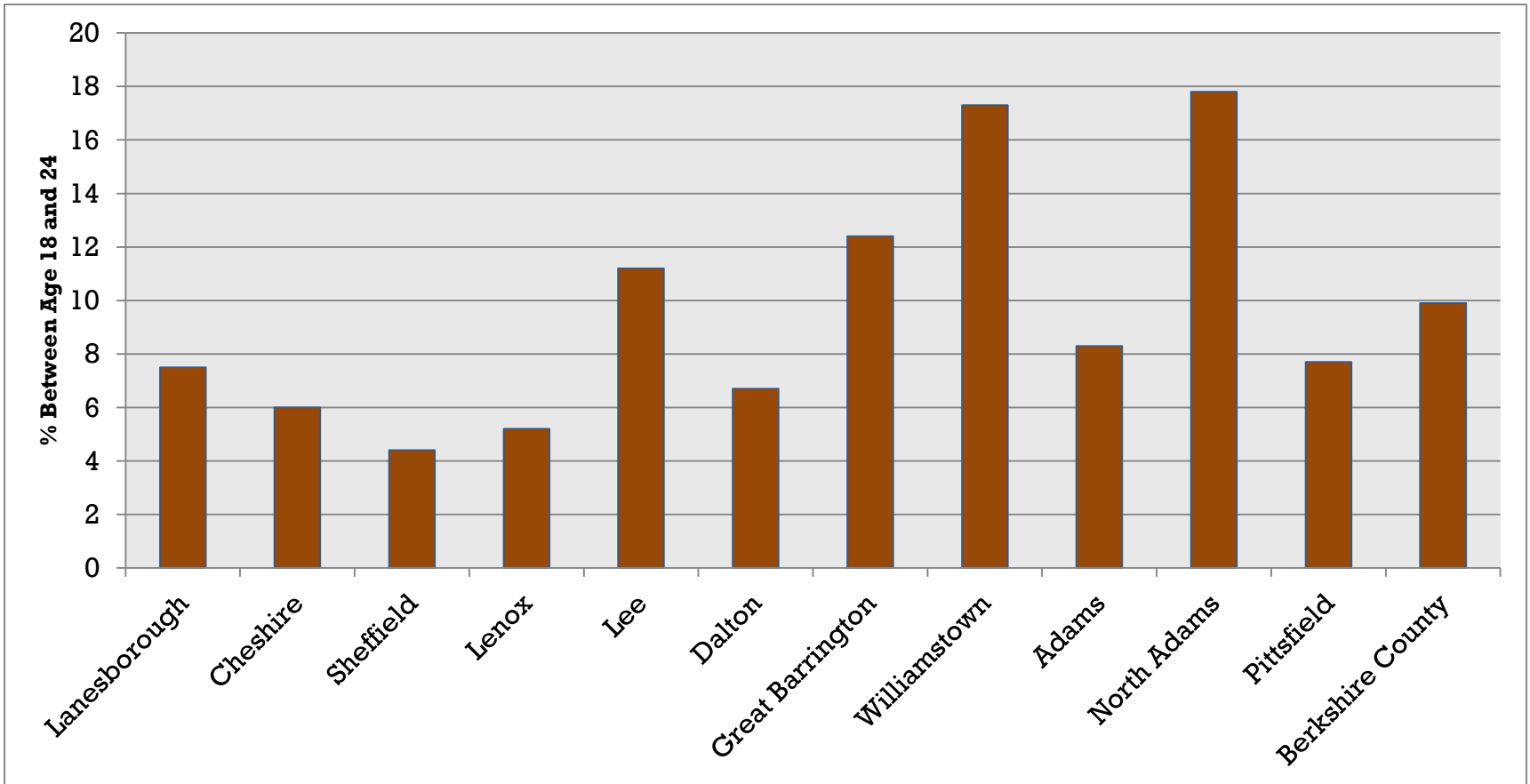


- Decline slow to begin, but accelerates after 2030
- Estimated population of 80,695 in 2060
- Loss of 50,524 since 2010

Impacts - 2030

- Population – reduced by 12,420
- School age children – reduced by 28%
 - (school enrollment declined 13% over last 10 years)
- Educational Attainment – reduction in amount with college degrees (especially advanced degrees)
- Workers – reduction by 25%
- Seniors – increase of 69%
- Housing – continued demand in South County due to seasonal residence. High vacancies in North County.

% of Population 18-24



12,346 in 2010 (estimated 21,405 will retire by 2020)

Effect on Labor Force

- Actual Labor Force (employed + looking for jobs) – 2010: 73,531

	Age 16+	Age 18-64
2010	109,230	81,209
2020	109,341	74,419
2030	104,837	62,878
2040	96,942	56,625
2050	86,031	52,168
2060	75,853	44,819

What Can We Do?

- Only long term solution is to change migration patterns
 - Need approximately 800 more young adults people migrating in each year
 - Attracting young adults helps sustain the population due to them having children
 - Attracting older citizens may slow the decline slightly, but we will still experience the same magnitude decline by 2060
- Stop the exodus after school

What to look for in the 2020 Census

