

Stockbridge Bowl Watershed Survey



Conducted by the BRPC, SBA and Town of Stockbridge

June 2012

This project has been financed with Federal Funds from the Environmental Protection Agency (EPA) to the Massachusetts Department of Environmental Protection (DEP) under an s. 319 Nonpoint Source Competitive Grant. The contents do not necessarily reflect the views and policies of EPA or the DEP, nor does the mention of trade names or commercial products constitute endorsement or recommendation for use.

Appendix B

PHOTODOCUMENTATION

Site Conditions along the East Shoreline and Beachwood

**Residential land use just south
of the Lily Brook inlet.**



© 2012 Google

Google earth

Imagery Date: 9/18/2011 1995

42°20'04.04" N 73°18'47.02" W elev. 940 ft

Eye alt. 1801 ft

Residential land uses dot the shoreline



© 2012 Google

Google earth

Imagery Date: 9/18/2011 1995

42°19'54.74" N 73°18'51.47" W elev 972 ft

Eye alt 1801 ft

Less dense with large lawns



© 2012 Google

Google earth

Imagery Date: 9/18/2011 1995

42°19'47.24" N 73°18'53.57" W elev 964 ft

Eye alt 1598 ft



Residential land uses dot the
shoreline

05/04/2012

Northern portion of the
shoreline is generally gravel and
stone



Shallow water substrate

05/04/2012





Northern portion of shoreline is
moderate density of homes



Homes more dense in southern
portion





Outlet pipe identified. Probable road drainage, but unsure of origin.



Town Beach. Severe erosion of driveway/parking lot material into lake. Also beach erosion.



Canada goose grazing at Town
Beach

Jack-in-the-pulpit in wooded
area north of town beach
driveway





**Little natural shoreline vegetation
remains in some sections**



05/04/2012





**Sand and silts deposited at the
Lakewood Beach**

Dense vegetation at the outlet



© 2012 Google

Google earth

Imagery Date: 9/18/2011 1998

42°19'36.79" N 73°19'21.61" W elev 930 ft

Eye alt 1512 ft



Shallow waters support lily pad
and emergent plants



Great blue heron favors this habitat, hunting frogs, fish and other small aquatic creatures



Unnamed tributary enters the lake in the
southern cove



Downed willow provides cover
and diverse habitat

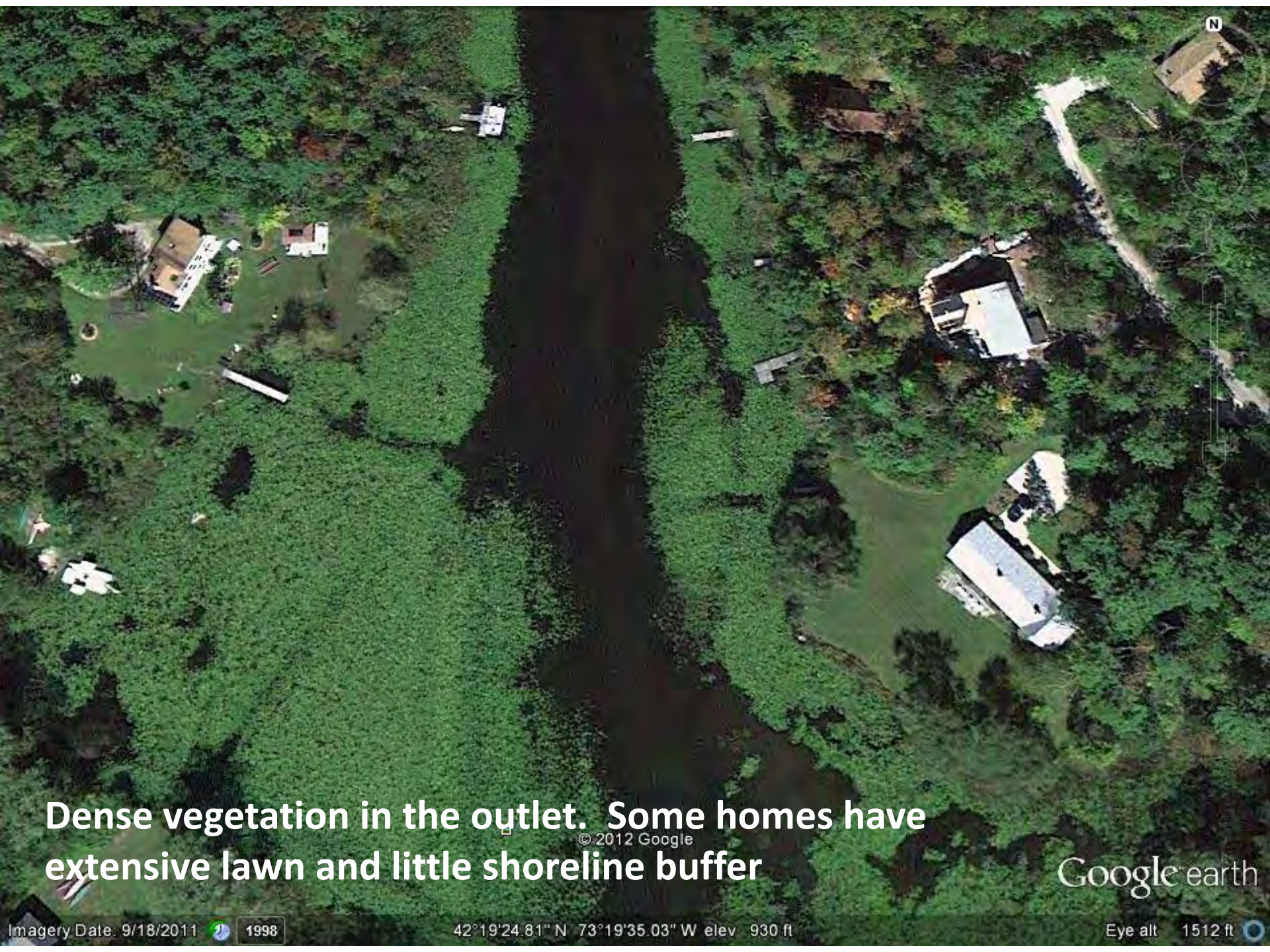




**Steeply sloped property with
exposed soils**

Walkway may serve as drainage channel
in severe storms





**Dense vegetation in the outlet. Some homes have
extensive lawn and little shoreline buffer**

© 2012 Google

Google earth

Imagery Date: 9/18/2011 1998

42°19'24.81" N 73°19'35.03" W elev 930 ft

Eye alt 1512 ft

Mahkeenac Road Survey-

Stormwater drains into Stockbridge Bowl from Rattlesnake Hill, Mahkeenac Heights and Mahkeenac Road. Runoff is channeled away from development enters the lake in a series of drainage ditches.



Looking north - land drains from the slopes to the east into the lake



Stormdrains collect water from Mahkeenac Road in the vicinity of the Town Beach

05/04/2012



05/04/2012

**Typical drainage pipe
outlet below the road.
This one is just north of
Town Beach**





Soil and hay drain off this construction site and into drainage ditches headed for the lake



Roadside drainage from construction site



**Outlet below
roadside
drainage
channel**



**South of Town
Beach, drainage off
Rattlesnake Hill is
channeled across
the road and
towards the lake**



**Rattlesnake Hill runoff is channeled
towards the lake**



05/04/2012

Site Conditions along the West Shoreline



The West Shoreline
looking south



**Generally rocky shore and
moderate depths**



**Canada goose families rest and graze on easily-
accessed grass area**



Scattered large homes are
characteristic



Southern section – soils become
more mucky with clay

The West Shoreline across from the island



© 2012 Google

Google earth

History Date: 9/18/2011 1998

42°19'44.43" N 73°19'23.05" W elev. 930 ft

Elev. alt. 1801 ft





Shallow water and mucky soils support emergent vegetation –
great habitat for young fish , amphibians, turtles and shore
birds who feed on them

Leaf & wood
chip pile in
upper outlet
channel could
leach nutrients



The West Shoreline with dense vegetation



© 2012 Google

Google earth



Great turtle habitat in the outlet channel

