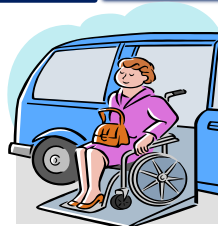


# Draft Berkshire Regional Coordinated Public Transit – Human Services Transportation Plan



MAY 2023

---

THIS PAGE IS LEFT BLANK INTENTIONALLY

## **Table of Contents**

**INTRODUCTION**

**ASSESSMENT OF AVAILABLE SERVICES**

**ASSESSMENT OF TRANSPORTATION NEEDS**

**ANALYSIS AND EVALUATION CRITERIA**

**POTENTIAL STRATEGIES**

**PRIORITIES FOR IMPLEMENTATION**

THIS PAGE IS LEFT BLANK INTENTIONALLY

## INTRODUCTION

The Coordinated Public Transit – Human Services Transportation (HST.) The plan focuses on the transportation needs of persons with disabilities, older adults, and persons with low income, provides strategies for meeting these needs, and prioritizes transportation services for funding and implementation.

The Coordinated HST Plan is updated to retain the region's eligibility for federal funding and address the growing needs of human services transportation users. This plan also fulfills the federal transit law requirements most recently legislated by the Bipartisan Infrastructure Law (BIL) and the Fixing America's Surface Transportation (FAST) Act.

Federal transit law requires that projects selected for funding under the Enhanced Mobility for Seniors and Individuals with Disabilities (Section 5310) Program be "included in a locally developed, coordinated public transit – human services transportation plan" and that the plan be "developed and approved through a process that included participation by seniors, individuals with disabilities, representatives of public, private, and nonprofit transportation and human services providers and other members of the public" utilizing transportation services. Federal Transit Authority (FTA) maintains flexibility in how projects appear in the coordinated plan. Projects may be identified as strategies, activities, and/or specific projects addressing an identified service gap or transportation coordination objective articulated and prioritized within the plan.

The first Coordinated Public Transit – HST Plan for Berkshire County was prepared in June 2007 by the Berkshire Regional Planning Commission (BRPC). The Human Services Plan has been periodically updated, with the last update occurring in April 2018. This 2023 update has been prepared to fulfill Federal legislative requirements and to identify changes in the transportation needs of individuals, including disabled, elderly, and low-income individuals.

### Funding Program and Eligibility

**Section 5310 Program:** This program is intended to enhance mobility for seniors and persons with disabilities by providing funds for programs to serve the special needs of transit-dependent populations beyond traditional public transportation services and the Americans with Disabilities Act (ADA) complementary para-transit services. Towards this goal, FTA provides financial assistance for transportation services planned, designed, and carried out to meet the special transportation needs of seniors and individuals with disabilities in all areas – large urbanized, small urbanized, and rural. This program requires coordination with other federally assisted programs and services to use federal resources efficiently.

This program provides grant funds for capital and operating expenses to recipients for:

- Public transportation projects planned, designed, and carried out to meet the special needs of seniors and individuals with disabilities when public transportation is insufficient, inappropriate, or unavailable;
- Public transportation projects that exceed the requirements of the A.D.A. of 1990 (42

U.S.C. 12101 et seq.);

- Public transportation projects that improve access to fixed-route service and decrease reliance on complementary para-transit; and
- Alternatives to public transportation projects that assist seniors and individuals with disabilities with transportation.

## **Eligible Applicants and Projects for the MassDOT Community Transit Grant Program**

- **Eligible Applicants**

- Regional Transit Authorities (RTAs)
- Private Nonprofit Organizations
- City, County, Town, and Tribal Governments
- Operators of Public Transportation (Includes shared-ride surface transportation services)
- Private Taxi Operators of Public Transportation

- **Eligible Activities**

### **Traditional Section 5310 projects examples include:**

- Buses and vans
- Wheelchair lifts, ramps, and securement devices
- Transit-related information technology systems, including scheduling/routing/one-call systems
- Mobility management programs
- Acquisition of transportation services under a contract, lease, or other arrangement

### **Nontraditional Section 5310 project examples include:**

- Travel training
- Volunteer driver programs
- Building an accessible path to a bus stop, including curb cuts, sidewalks, accessible pedestrian signals, or other accessible features
- Improving signage, or way-finding technology
- The incremental cost of providing same-day service or door-to-door service
- Purchasing vehicles to support new accessible taxi, rides sharing, and/or vanpooling programs
- Mobility management programs

Through the identification of transportation needs of the elderly, individuals with disabilities, and low-income persons, this Coordinated Plan will not only establish eligibility for federal funding but also provide strategies to address gaps in the provision of service, maximize coverage areas, minimize duplication of services, and facilitating the most cost-effective transportation possible with available resources through coordination with transportation providers and human services

agencies in Berkshire County.

As will be demonstrated herein, Berkshire County, and its transit providers, are committed to providing individuals with disabilities as many opportunities as possible through innovative and coordinative efforts beyond those that are required under the provisions of the Americans with Disabilities Act.

### **Transportation Coordination Efforts in Berkshire County**

In July 2009, the "Berkshire County Mobility Team" comprised of people with disabilities, family members, policy researchers, policymakers, service planners, employment service providers, public and private transportation providers, employers, state and private human service providers, and other stakeholders was formed to improve Berkshire County resident's quality of life through improved transportation access.

The Berkshire County Mobility Team supports public and private transportation. It works cooperatively to enhance and expand appropriate transportation options, so people can connect with the places they need to go. The team members attended the "2009 Massachusetts Institute for Transportation Coordination" to develop a Berkshire County Transportation Action Plan. The team developed a 90-day and 12-month Action Plan, inclusive of three significant goals that serve to:

- increase flexibility through coordination to remove transportation barriers;
- collaborative planning activities;
- and service and resource coordination.

The team completed their 12-month Action Plan and is working together to accomplish their goal. In January 2014, this team was merged with the newly formed Berkshire Regional Coordinating Council and is actively working to continue the ongoing Human Services Transportation Coordination efforts in Berkshire County.

### Berkshire Regional Coordinating Council On Transportation (BRCCOT)

In 2011, Governor Patrick signed Executive Order (EO) 530, which formed a commission to review the quality and efficiency of para-transit and community transportation throughout the Commonwealth. The commission held public forums across Massachusetts and then issued a report with three overarching recommendations:

1. Establish a Statewide Coordinating Council on Community Transportation (SCCCT) – launched September 2013;
2. Hire a statewide Mobility Manager – at MassDOT;
3. Form Regional Coordinating Councils (RCCs) to address para-transit and community transportation at the local level.

RCCS are voluntary advisory bodies providing a forum for open discussion, information exchange, and decision-making about regional transportation priorities. RCCs are an opportunity for local stakeholders to come together to:

- Identify unmet needs, articulate regional priorities, and build coalitions around new projects in mobility and transportation;
- Coordinate existing services at the local level to serve more people and increase the

sustainability of services;

- Communicate local unmet needs and mobility priorities to planning agencies (for their coordinated plan updates), MassDOT, the Executive Office of Health and Human Services (EOHHS), and other state agencies;
- Participate in a statewide campaign to raise awareness of the important role community transportation services play for seniors, people with disabilities, and all Massachusetts residents.

In January 2014, BRCCOT was created and merged with the already active Berkshire County Mobility Team members who advocated for community transportation for seniors, persons with disabilities, and persons with low income in Berkshire County. Since its formation, the BRCCOT has increased its membership as a result of active public outreach to all the C.O.A.s, public, private, and nonprofit human services transportation providers in Berkshire County. The BRCCOT members meet quarterly and as needed and have been very active in recognizing community transportation needs and identifying regional transportation priorities in Berkshire County.

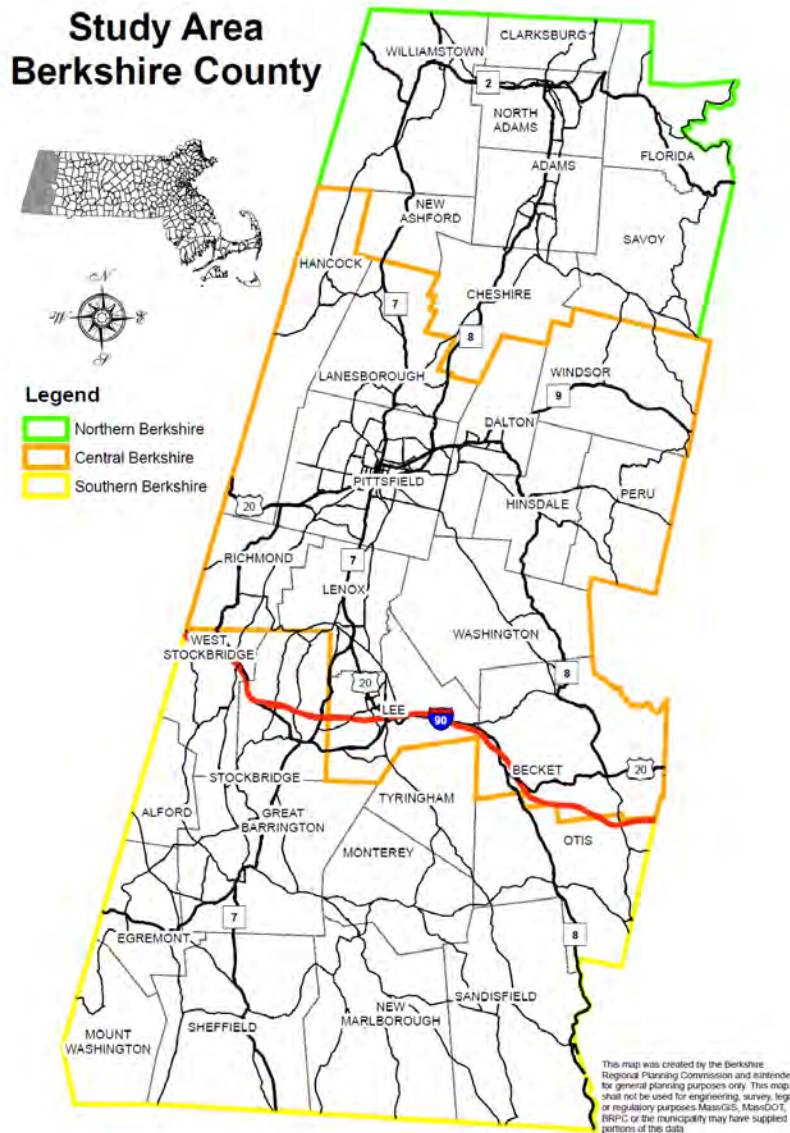
This Coordinated Plan truly does represent a coordinated and collaborative effort among human service providers, transit providers, the BRCCOT, and the BRPC. The Coordinated Plan has been prepared with a genuine effort to solicit public participation. Announcements on the availability of the draft document were placed on the website (including the document itself), and public meeting notice was placed at public offices, including the BRPC, BRTA, COAs, and other private, nonprofit HST providers. A public meeting was held on April 26, 2023 (in person) at the BRTA's office, and a virtual input session on May 17, 2023, to gain input on the Coordinated Human Services Transportation Plan update in conjunction with the BRCCOT meeting.



**A) ASSESSMENT OF AVAILABLE SERVICES**

Berkshire County has three points of urbanized populations: Great Barrington in the south, Pittsfield in the center, and North Adams/Adams in the north. The "hubs" of Great Barrington, Pittsfield, and North Adams/Adams form the framework for the connectivity throughout the County that the transit system provides. Figure 1 below shows the study area of Berkshire County.

**Figure 1**



To date, Berkshire Regional Planning Commission (BRPC) has completed a Northern Berkshire Transit Study and a Southern Berkshire Community Transit Study. BRPC also conducted an Analysis of the BRTA Fixed Route Bus System. In 2019 in collaboration with 1Berkshire, BRPC worked with the Transportation Strategy Group to hire a consultant to conduct a feasibility study of what the Transportation Management Association (TMA) would look like in the Berkshires. In 2022 in collaboration with the Bard College at Simon's Rock and the Town of Great Barrington, BRPC conducted the Berkshire County Microtransit Planning study.

## Transportation Providers

The inventory of Transportation Providers in Berkshire County is included in Appendix A. This Berkshire County Transportation Guide book serves as a directory of transportation providers to public transit users. It provides information on rider eligibility, service hours, and phone numbers to contact for the services.

### **Berkshire Regional Transit Authority (BRTA):**

The Berkshire Regional Transportation Authority is the principal community transportation provider in Berkshire County. It was created in 1974 under MGL §161 B as one of the first eight Regional Transit Authorities to administer public transportation services in member communities. Today BRTA provides fixed routes, demand response, and other public transportation services in twenty-seven member communities.

It provides thirteen fixed route bus services in thirteen member communities: Williamstown, North Adams, Adams, Cheshire, Lanesborough, New Ashford, Dalton, Hinsdale, Pittsfield, Lenox, Stockbridge, Lee, and Great Barrington, spanning Berkshire County from Williamstown in the north to Great Barrington in the south.

Besides full-fare fixed route service, the other transportation services the BRTA provides are half-fare fixed route service for customers over 60 or possessing a valid Medicare card, people with disabilities who have a valid Massachusetts Access Pass, or K-12 students with proof of a school photo ID; complementary ADA para-transit transportation; and Non-ADA para-transit transportation.

In addition to complimentary para-transit services for seniors and people with disabilities, as required under the Americans with Disabilities Act, the BRTA also provides to the same population Non-ADA chair-car service that is not connected with the fixed route bus system corridor. This specialized service has a higher user fee of \$7.50 for the initial town and \$2.50 for each additional town of travel than the traditional ADA service of \$2.50 per town of travel or a maximum of \$9 per one-way trip. This is restricted to BRTA member communities: Adams; Alford; Becket; Cheshire; Clarksburg; Dalton; Egremont; Florida; Great Barrington; Hinsdale; Lanesborough; Lee; Lenox; Monterey; Mount Washington; New Ashford; North Adams; Otis; Peru; Pittsfield; Richmond; Savoy; Sheffield; Stockbridge; Washington; Williamstown; and Windsor.

It also provides vans to nonprofit agencies like the Councils on Aging (COA), Soldier On, etc., for the BRTA member communities to serve seniors or disabled persons within those communities.

Figure 2 below shows the BRTA service area.

Figure 2

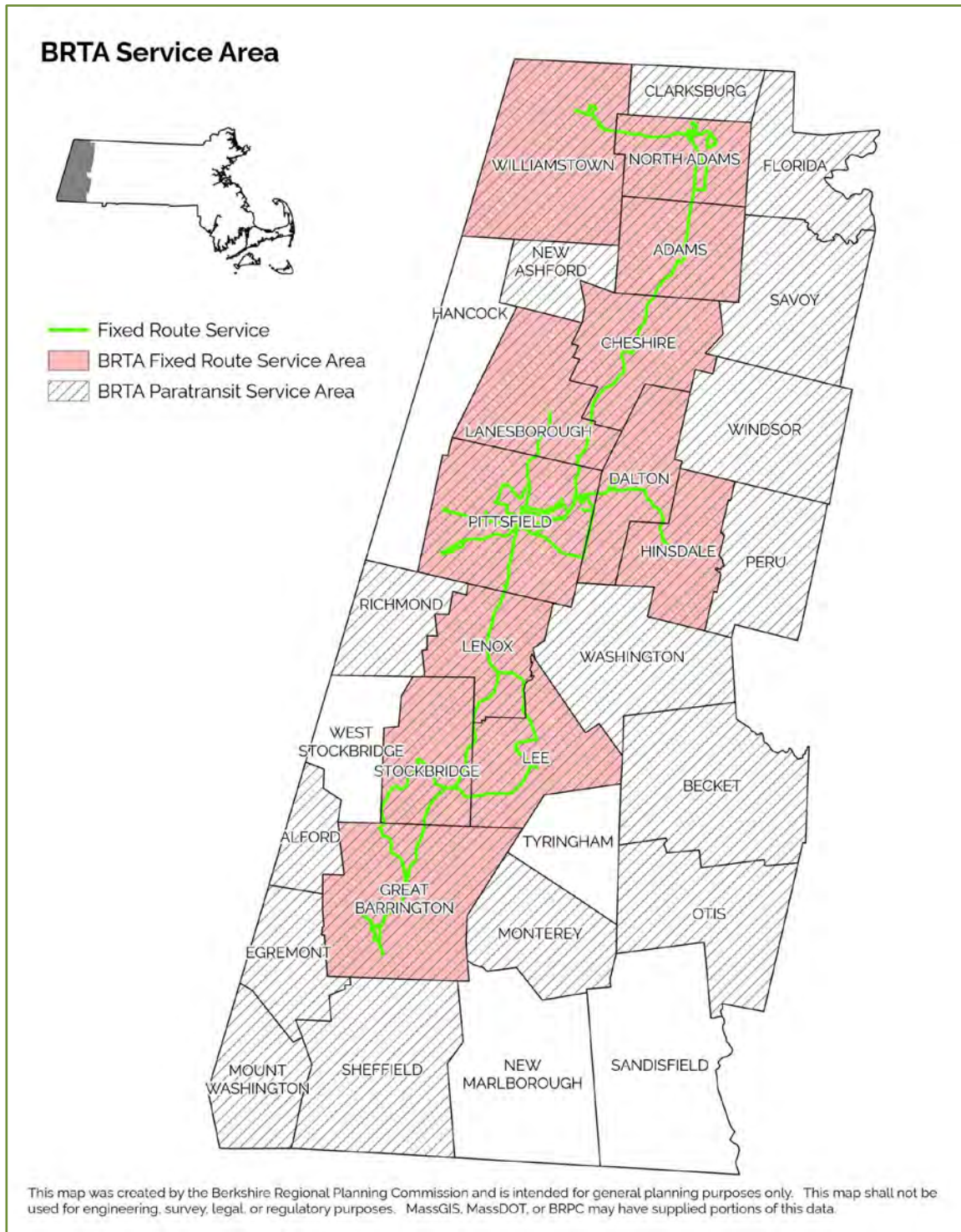




Table I below details the BRTA Total Ridership for FY 2022.

**Table 1**

**Berkshire Regional Transit Authority**

**Total Ridership**

	July	August	September	October	November	December	January	February	March	April	May	June	Total
FY 22	35,749	33,101	39,118	37,392	32,459	36,309	30,745	30,363	40,146	40,410	39,291	43,140	438,223
FY 21	29,228	32,236	30,719	32,543	26,947	27,993	25,165	25,767	32,795	33,851	32,009	34,047	363,300
	22.31%	2.68%	27.34%	14.90%	20.45%	29.71%	22.17%	17.84%	22.42%	19.38%	22.75%	26.71%	20.62%
FY 20	51,675	53,836	49,037	53,172	46,216	42,993	46,810	45,283	35,692	16,477	18,086	24,240	483,517
	-30.82%	-38.52%	-20.23%	-29.68%	-29.77%	-15.55%	-34.32%	-32.95%	12.48%	145.25%	117.25%	77.97%	-9.37%

**Fixed Route**

	July	August	September	October	November	December	January	February	March	April	May	June	Total
FY 22	32,151	29,371	35,296	33,802	29,117	32,295	27,179	26,783	35,434	36,421	35,187	38,885	391,921
FY 21	26,455	29,309	27,466	29,672	24,306	25,334	22,611	23,126	29,280	30,430	28,643	30,468	327,100
	21.53%	0.21%	28.51%	13.92%	19.79%	27.48%	20.20%	15.81%	21.02%	19.69%	22.85%	27.63%	19.82%
FY 20	45,457	47,963	42,992	46,522	40,588	38,125	41,019	40,063	32,327	15,398	16,900	22,376	429,730
	-29.27%	-38.76%	-17.90%	-27.34%	-28.26%	-15.29%	-33.74%	-33.15%	9.61%	136.53%	108.21%	73.78%	-8.80%

**Paratransit**

	July	August	September	October	November	December	January	February	March	April	May	June	Total
FY 22	3,598	3,730	3,822	3,590	3,342	4,014	3,566	3,580	4,712	3,989	4,104	4,255	46,302
FY 21	2,773	2,927	3,253	2,871	2,641	2,659	2,554	2,641	3,515	3,421	3,366	3,579	36,200
	29.75%	27.43%	17.49%	25.04%	26.54%	50.96%	39.62%	35.55%	34.05%	16.60%	21.93%	18.89%	27.91%
FY 20	6,218	5,873	6,045	6,650	5,628	4,868	5,791	5,220	3,365	1,079	1,186	1,864	53,787
	-42.14%	-36.49%	-36.77%	-46.02%	-40.62%	-17.54%	-38.42%	-31.42%	40.03%	269.69%	246.04%	128.27%	-13.92%

**Paratransit**

	July	August	September	October	November	December	January	February	March	April	May	June	Total
FY 22	3,598	3,730	3,822	3,590	3,342	4,014	3,566	3,580	4,712	3,989	4,104	4,255	46,302
Non-ADA	22	18	25	20	18	47	38	46	34	27	30	38	363
ADA	1464	1405	1527	1518	1357	1554	1399	1413	1906	1724	1816	1974	19,057
COA	2112	2307	2270	2052	1967	2413	2129	2121	2772	2238	2258	2243	26,882
FY 21	2,773	2,927	3,253	2,871	2,641	2,659	2,554	2,641	3,515	3,421	3,366	3,579	36,200
Non-ADA	19	3	15	14	34	11	39	8	10	15	27	21	216
ADA	1097	1025	1069	1150	1075	1113	1084	1135	1543	1571	1431	1535	14,828
COA	1657	1899	2169	1707	1532	1535	1431	1498	1962	1835	1908	2023	21,156
	29.75%	27.43%	17.49%	25.04%	26.54%	50.96%	39.62%	35.55%	34.05%	16.60%	21.93%	18.89%	27.91%
FY 20	6,218	5,873	6,045	6,650	5,628	4,868	5,791	5,220	3,365	1,079	1,186	1,864	53,787
Non-ADA	64	63	122	118	150	89	118	61	22	2	25	4	838
ADA	2138	2124	2154	2434	2022	1803	2078	1869	1408	714	688	848	20,280
COA	4016	3686	3769	4098	3456	2976	3595	3290	1935	363	473	1012	32,669
	-42.14%	-36.49%	-36.77%	-46.02%	-40.62%	-17.54%	-38.42%	-31.42%	40.03%	269.69%	246.04%	128.27%	-13.92%

\*\*COVID-19 Pandemic 3/16/2020

Source: BRTA

**BRTA Fixed Route Fare:**

**Local Fares**

	Full Fare	Reduced Fare
Cash	\$1.75	\$0.85
Charlie Card	\$1.55	\$0.75

**Local Pass**

	1 Day	7 Day	30 Day
Full Fare	Unavailable	\$13.00	\$52.00
Reduced Fare	Unavailable	\$10.00	\$39.00

**Systemwide Fares**

	Full Fare	Reduced Fare
Cash	\$4.50	\$2.25
Charlie Card	\$4.00	\$2.00

**Systemwide Pass**

	1 Day	7 Day	30 Day
Full Fare	\$10.00	\$35.00	\$140.00
Reduced Fare	\$10.00	\$26.00	\$105.00

**Student Pass**

	Student K-12 30 day	College 8/1 – 12/31 1/1 – 5/31
Systemwide	\$26.00	\$250.00

**BRTA ADA Paratransit Fares:**

- Local (in town) \$2.50
- Local (in town + adjoining town) \$3.50
- Systemwide (in town + 2 towns) \$7.50
- Systemwide (maximum fare) \$9.00

**BRTA Specialized Para-transit Service Fare:** \$7.50 for the initial town /\$2.50 for each additional town of travel.

## B) ASSESSMENT OF TRANSPORTATION NEEDS

An assessment of transportation service gaps in Berkshire County was performed for three demographic groups: seniors, persons with disabilities, and persons with low income. An assessment of transportation service gaps was done based on the following:

- Available transportation services in Berkshire County;
- Berkshire County demographics;
- Social and economic characteristics of Berkshire County Communities.

As illustrated in Figure 3 on the following page, seniors living in ten Berkshire County Communities, Becket, Florida, Hancock, Mount Washington, Monterey, New Marlborough, Otis, Peru, Sandisfield, and Windsor, don't have access to any public or human services transportation. There are significant transportation gaps for the seniors living in these ten communities. Seniors in these communities depend on their family members and friends to attend medical appointments or pay higher costs for transportation services provided by private taxis and ambulance services that are not subsidized.

Figure 4 shows the transportation services available for persons with disabilities living in Berkshire County Communities. Persons with disabilities have access to transportation through BRTA para-transit services and other public, private, and nonprofit human services transportation.

Figure 5 shows the transportation services available for low-income persons in Berkshire County Communities. There are significant transportation service gaps for this demographic group in Berkshire County. As illustrated in Figure 5, persons with low income living in twenty Berkshire County Communities (not served by BRTA fixed route service) have no access to public transportation. This demographic group tends to have reliance on public transportation as they don't own personal automobiles and cannot afford to pay higher costs for transportation services provided by private taxis.

Collectively, the series of figures on the preceding pages and the data tables illustrate the transportation service gaps within Berkshire County.



Figure 3: Service Gap for Seniors

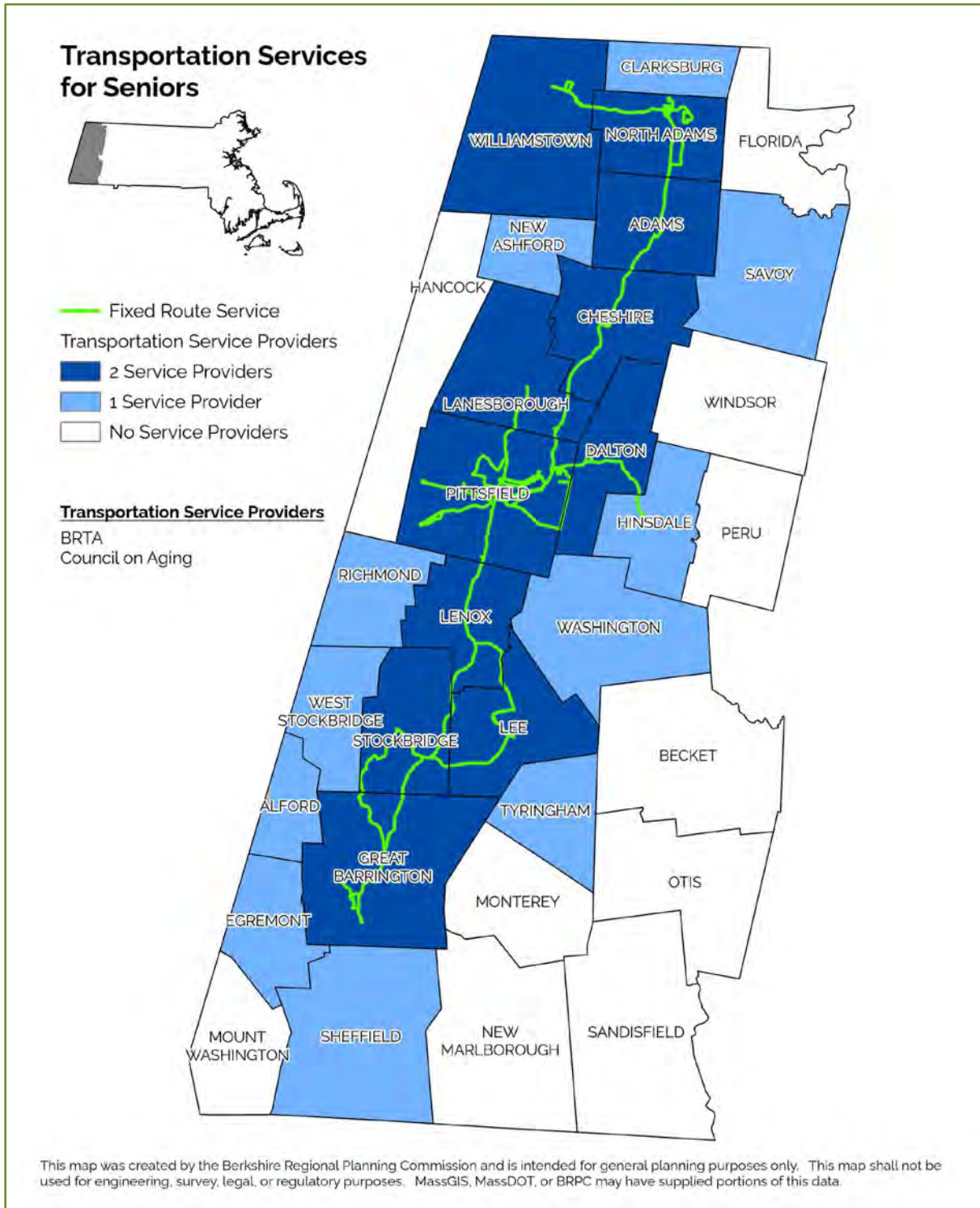




Figure 4: Service Gap for Disabled

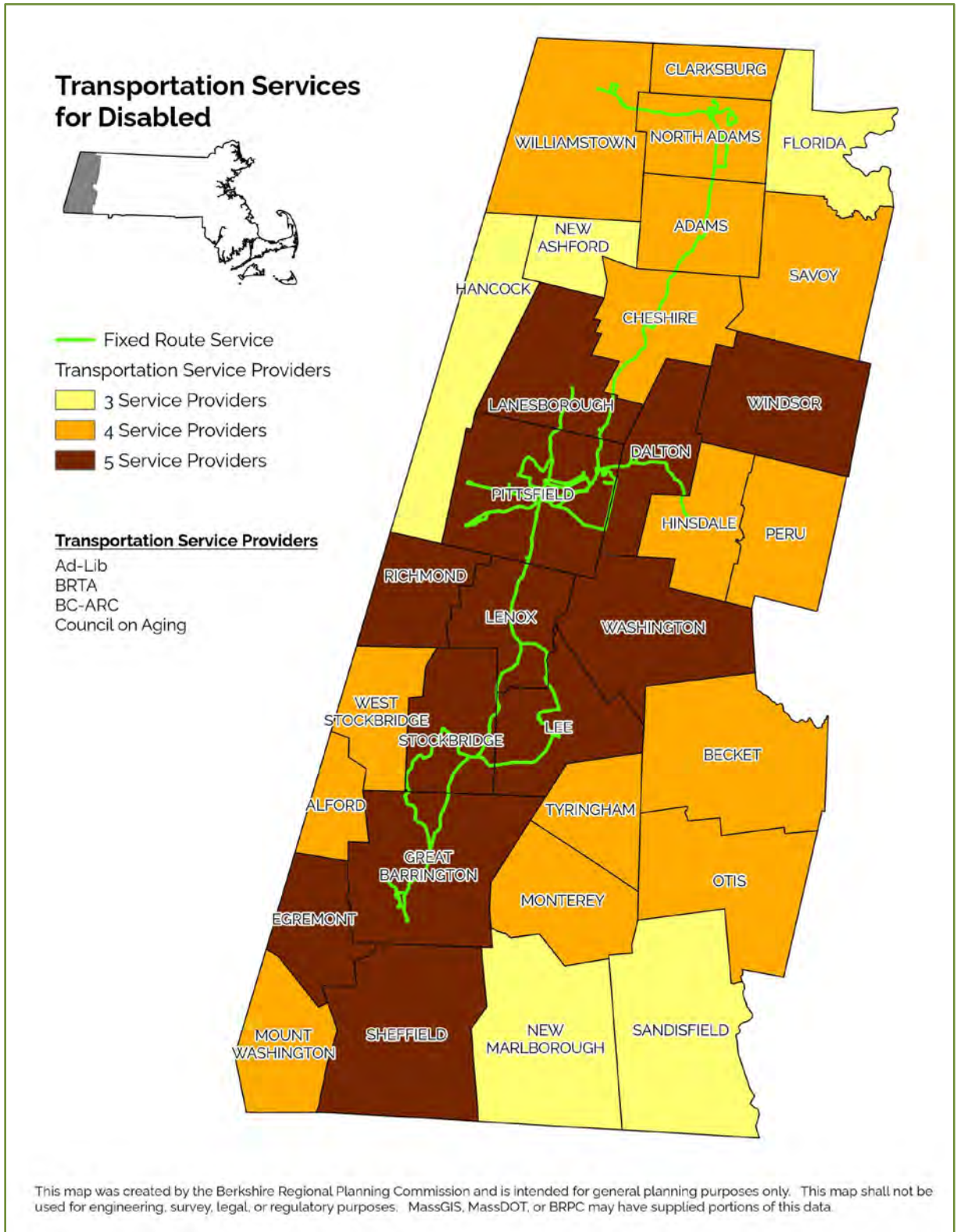
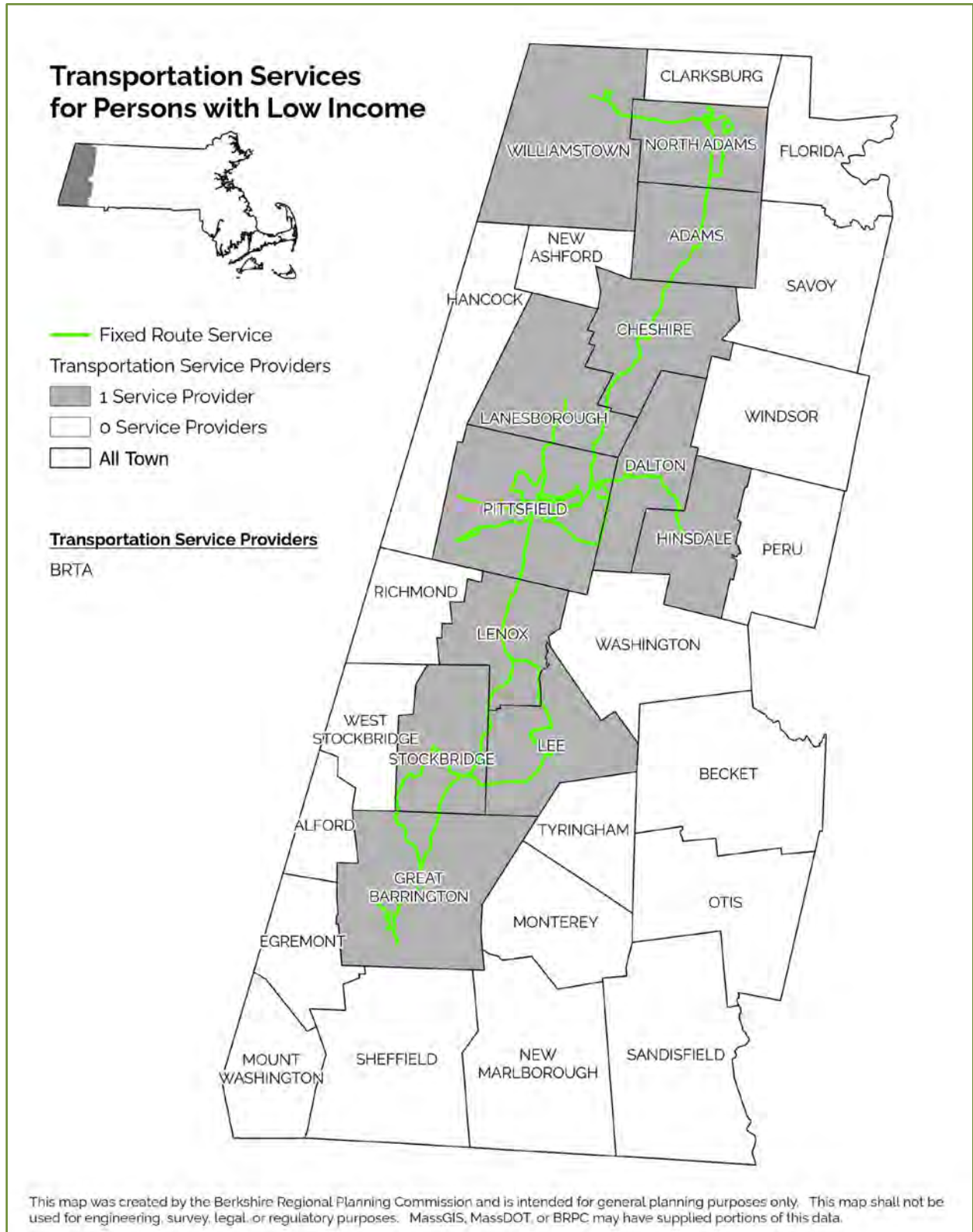


Figure 5: Service Gap for Persons with Low Income



## Berkshire County Demographics

In order to develop a coordinated public transit system, it is vital to examine the demographics of the area:

- the population change;
- the needs of specific populations being served; and
- transportation patterns & habits contributing to the way in which a coordinated system should work.

First, we analyzed the population change in Berkshire County Communities. Table 2 on the next page shows the population growth and change from 2000, 2010, and 2020 in Berkshire County Communities.

Overall, Berkshire County has seen a population loss in both decades: population decreased by 2.8% from 2000 to 2010 and 1.7% from 2010 to 2020. From 2010 to 2020 in Berkshire County Communities: Tyringham had the highest population increase of 30.6%, and Washington had the highest population loss of 8.2%. Pittsfield population decreased by 2.3% from 2000 to 2010 and 1.8% from 2010 to 2020. North Adams also had a population loss of 6.7% from 2000 to 2010 and 5.4% from 2010 to 2020.



Table 2: Population Change

Communities	2000 Population	2010 Population	% Change (2000-2010)	2000-2010 Rank by Growth Increase	2020 Population	% Change (2000-2020)	% Change (2010-2020)	2010-2020 Rank by Growth Increase
Adams	8809	8485	-3.7%	22	8166	-7.3%	-3.8%	22
Alford	399	494	23.8%	2	486	21.8%	-1.6%	16
Becket	1756	1779	1.3%	11	1931	10.0%	8.5%	5
Cheshire	3401	3235	-4.9%	23	3258	-4.2%	0.7%	15
Clarksburg	1682	1702	1.2%	12	1657	-1.5%	-2.6%	20
Dalton	6892	6756	-2.0%	19	6330	-8.2%	-6.3%	28
Egremont	1345	1225	-8.9%	31	1372	2.0%	12.0%	3
Florida	676	752	11.2%	4	694	2.7%	-7.7%	31
Great Barrington	7515	7104	-5.5%	24	7172	-4.6%	1.0%	14
Hancock	716	717	0.1%	14	757	5.7%	5.6%	7
Hinsdale	1877	2032	8.3%	6	1919	2.2%	-5.6%	27
Lanesborough	2991	3091	3.3%	8	3038	1.6%	-1.7%	17
Lee	5993	5943	-0.8%	15	5788	-3.4%	-2.6%	19
Lenox	5077	5025	-1.0%	16	5095	0.4%	1.4%	11
Monterey	936	961	2.7%	10	1095	17.0%	13.9%	2
Mount Washington	130	167	28.5%	1	160	23.1%	-4.2%	24
New Ashford	247	228	-7.7%	27	250	1.2%	9.6%	4
New Marlborough	1494	1509	1.0%	13	1528	2.3%	1.3%	13
North Adams	14691	13708	-6.7%	26	12961	-11.8%	-5.4%	26
Otis	1364	1612	18.2%	3	1634	19.8%	1.4%	12
Peru	816	847	3.8%	7	814	-0.2%	-3.9%	23
Pittsfield	45797	44737	-2.3%	20	43927	-4.1%	-1.8%	18
Richmond	1604	1475	-8.0%	29	1407	-12.3%	-4.6%	25
Sandisfield	824	915	11.0%	5	989	20.0%	8.1%	6
Savoy	705	692	-1.8%	18	645	-8.5%	-6.8%	29
Sheffield	3335	3257	-2.3%	21	3327	-0.2%	2.1%	10
Stockbridge	2272	1947	-14.3%	32	2018	-11.2%	3.6%	8
Tyringham	346	327	-5.5%	25	427	23.4%	30.6%	1
Washington	544	538	-1.1%	17	494	-9.2%	-8.2%	32
West Stockbridge	1426	1306	-8.4%	30	1343	-5.8%	2.8%	9
Williamstown	8418	7754	-7.9%	28	7513	-10.8%	-3.1%	21
Windsor	875	899	2.7%	9	831	-5.0%	-7.6%	30
<b>Berkshire County</b>	<b>134,953</b>	<b>131,219</b>	<b>-2.8%</b>		<b>129,026</b>	<b>-4.4%</b>	<b>-1.7%</b>	

Source: US Census Bureau 2000, 2010, 2020

As part of the analysis, particular attention is paid to specific populations that may depend more on public transportation than the general population, including:

- Children;
- Senior Citizens;
- People with disabilities; and
- People living below the poverty level.

Table 3 on the next page shows the population by age group in Berkshire County Communities. Youth are an important population group to be considered. Children (5-14) who are old enough to participate in after-school activities but not old enough to drive depend on their parents' automobiles and public transportation to and from after-school programs. 9.4% of Berkshire County's population are children (5-14). It is less than the Massachusetts state average of 11%. Pittsfield has the highest percentage, 36.13% of all children (5-14) in Berkshire County. Mount Washington has the lowest percentage, 0.02% of all children (5-14) in Berkshire County.

Table 4 on page 19 shows the percentage changes of children < 15 years in Berkshire County communities from 2010 to 2021. In Berkshire County, children (5-14) decreased by 14.4%. This is more than the Massachusetts statewide average decrease of 3%.



Table 3: Population by Age Group

Communities	Population by Age Group													Total All Ages
	< 5	5-14	% of Children (5-14)	% of all Children (5-14) in Berkshire County	15-34	35-54	55-64	65-74	75-84	85+	Elderly Population (55+)	% of Elderly Population 55+ by Community	% of all Elderly Population 55+ in Berkshire County	
Adams	364	783	9.6%	6.46%	1,818	1,949	1,385	1,062	449	351	3,247	39.8%	6.3%	8,161
Alford	24	28	6.0%	0.23%	41	86	89	117	47	33	286	61.5%	0.6%	465
Becket	76	216	10.0%	1.78%	382	683	386	311	86	12	795	36.9%	1.5%	2,152
Cheshire	166	280	8.6%	2.31%	684	656	639	569	183	66	1,457	44.9%	2.8%	3,243
Clarksburg	28	259	14.8%	2.14%	350	418	268	231	141	55	695	39.7%	1.4%	1,750
Dalton	282	787	12.4%	6.50%	951	1,603	1,164	855	413	301	2,733	43.0%	5.3%	6,356
Egremont	127	85	5.6%	0.70%	410	336	221	183	120	39	563	37.0%	1.1%	1,521
Florida	10	73	9.3%	0.60%	129	251	169	97	26	28	320	40.9%	0.6%	783
Great Barrington	363	715	10.0%	5.90%	1,557	1,545	1,281	1,054	382	272	2,989	41.7%	5.8%	7,169
Hancock	76	59	7.9%	0.49%	131	178	142	124	29	10	305	40.7%	0.6%	749
Hinsdale	104	129	6.9%	1.06%	512	343	366	217	141	54	778	41.7%	1.5%	1,866
Lanesborough	77	433	14.2%	3.57%	436	680	674	526	169	48	1,417	46.6%	2.8%	3,043
Lee	129	609	10.5%	5.03%	1,264	1,386	781	785	621	209	2,396	41.4%	4.7%	5,784
Lenox	49	236	4.6%	1.95%	1,144	994	769	892	574	431	2,666	52.4%	5.2%	5,089
Monterey	9	55	6.9%	0.45%	93	115	126	142	97	156	521	65.7%	1.0%	793
Mount Washington	1	3	1.9%	0.02%	33	32	41	27	19	5	92	57.1%	0.2%	161
New Ashford	2	5	2.2%	0.04%	50	48	62	26	22	8	118	52.9%	0.2%	223
New Marlborough	52	160	10.2%	1.32%	267	450	255	212	134	43	644	40.9%	1.3%	1,573
North Adams	623	1,211	9.3%	10.00%	3,510	3,261	1,859	1,478	679	403	4,419	33.9%	8.6%	13,024
Otis	37	79	5.4%	0.65%	328	372	286	170	154	34	644	44.1%	1.3%	1,460
Peru	31	66	8.9%	0.54%	132	232	139	130	12	2	283	38.0%	0.6%	744
Pittsfield	2,034	4,376	10.0%	36.13%	10,575	10,845	7,367	4,898	2,588	1,207	16,060	36.6%	31.3%	43,890
Richmond	31	138	9.4%	1.14%	206	338	294	309	127	25	755	51.4%	1.5%	1,468
Sandisfield	50	86	9.5%	0.71%	158	231	129	123	77	47	376	41.7%	0.7%	901
Savoy	18	118	16.7%	0.97%	70	199	99	150	27	27	303	42.8%	0.6%	708
Sheffield	75	293	8.8%	2.42%	629	750	490	727	272	82	1,571	47.3%	3.1%	3,318
Stockbridge	32	107	5.9%	0.88%	308	293	345	482	176	84	1,087	59.5%	2.1%	1,827
Tyringham	12	39	7.2%	0.32%	113	111	113	90	44	19	266	49.2%	0.5%	541
Washington	12	49	9.8%	0.40%	37	94	115	144	42	8	309	61.7%	0.6%	501
West Stockbridge	79	123	10.6%	1.02%	147	364	201	197	37	16	451	38.7%	0.9%	1,164
Williamstown	249	435	5.7%	3.59%	3,481	1,051	788	983	444	247	2,462	32.1%	4.8%	7,678
Windsor	72	78	7.9%	0.64%	209	296	177	126	20	6	329	33.4%	0.6%	984
<b>Berkshire County</b>	<b>5,294</b>	<b>12,113</b>	<b>9.4%</b>	<b>100.0%</b>	<b>30,155</b>	<b>30,190</b>	<b>21,220</b>	<b>17,437</b>	<b>8,352</b>	<b>4,328</b>	<b>51,337</b>	<b>39.8%</b>	<b>100.0%</b>	<b>129,089</b>
Massachusetts	346,175	767,241	11.0%		1,916,166	1,775,198	963,496	730,785	336,776	148,886	2,179,943	31.2%		6,984,723

Source: US Census Bureau American Community Survey 2017-2021



Table 4: Percentage changes of children < 15 years from 2010 to 2021

Communities	Population Decrease of Children < 15 Years									
	2010 Children < 5	2021 Children < 5	Number of Children < 5 change from 2010 - 2021	% of children < 5 change from 2010 to 2021	2010 Children 5-14	2021 Children 5-14	Number of Children <5-14 change from 2010 - 2021	% of children 5-14 change from 2010 to 2021	Number of Children < 15 change from 2010- 2021	% of Children < 15 change from 2010- 2021
Adams	387	364	-23	-5.9%	967	783	-184	-19.0%	-207	-15.3%
Alford	13	24	11	84.6%	40	28	-12	-30.0%	-1	-1.9%
Becket	80	76	-4	-5.0%	175	216	41	23.4%	37	14.5%
Cheshire	137	166	29	21.2%	348	280	-68	-19.5%	-39	-8.0%
Clarksburg	76	28	-48	-63.2%	217	259	42	19.4%	-6	-2.0%
Dalton	286	282	-4	-1.4%	923	787	-136	-14.7%	-140	-11.6%
Egremont	36	127	91	252.8%	107	85	-22	-20.6%	69	48.3%
Florida	45	10	-35	-77.8%	84	73	-11	-13.1%	-46	-35.7%
Great Barrington	262	363	101	38.5%	703	715	12	1.7%	113	11.7%
Hancock	35	76	41	117.1%	90	59	-31	-34.4%	10	8.0%
Hinsdale	71	104	33	46.5%	228	129	-99	-43.4%	-66	-22.1%
Lanesborough	135	77	-58	-43.0%	364	433	69	19.0%	11	2.2%
Lee	269	129	-140	-52.0%	606	609	3	0.5%	-137	-15.7%
Lenox	186	49	-137	-73.7%	505	236	-269	-53.3%	-406	-58.8%
Monterey	40	9	-31	-77.5%	99	55	-44	-44.4%	-75	-54.0%
Mount Washington	4	1	-3	-75.0%	14	3	-11	-78.6%	-14	-77.8%
New Ashford	7	2	-5	-71.4%	29	5	-24	-82.8%	-29	-80.6%
New Marlborough	62	52	-10	-16.1%	164	160	-4	-2.4%	-14	-6.2%
North Adams	479	623	144	30.1%	1,357	1,211	-146	-10.8%	-2	-0.1%
Otis	68	37	-31	-45.6%	143	79	-64	-44.8%	-95	-45.0%
Peru	26	31	5	19.2%	106	66	-40	-37.7%	-35	-26.5%
Pittsfield	2,552	2,034	-518	-20.3%	5,164	4,376	-788	-15.3%	-1,306	-16.9%
Richmond	32	31	-1	-3.1%	143	138	-5	-3.5%	-6	-3.4%
Sandisfield	39	50	11	28.2%	85	86	1	1.2%	12	9.7%
Savoy	24	18	-6	-25.0%	88	118	30	34.1%	24	21.4%
Sheffield	119	75	-44	-37.0%	359	293	-66	-18.4%	-110	-23.0%
Stockbridge	56	32	-24	-42.9%	134	107	-27	-20.1%	-51	-26.8%
Tyringham	6	12	6	100.0%	30	39	9	30.0%	15	41.7%
Washington	21	12	-9	-42.9%	41	49	8	19.5%	-1	-1.6%
West Stockbridge	32	79	47	146.9%	139	123	-16	-11.5%	31	18.1%
Williamstown	242	249	7	2.9%	579	435	-144	-24.9%	-137	-16.7%
Windsor	23	72	49	213.0%	112	78	-34	-30.4%	15	11.1%
<b>Berkshire County</b>	<b>5,850</b>	<b>5,294</b>	<b>-556</b>	<b>-9.5%</b>	<b>14,143</b>	<b>12,113</b>	<b>-2,030</b>	<b>-14.4%</b>	<b>-2,586</b>	<b>-12.9%</b>
Massachusetts	367,087	346,175	-20,912	-5.7%	791,300	767,241	-24,059	-3.0%	-44,971	-3.9%

Source: US Census Bureau Decennial Census 2010, American Community Survey 2017-2021

The elderly population is another important population group to be considered. When planning a coordinated public transit system and expanding services to all people, making accommodations for the seniors to do day-to-day activities within our communities and remain more independent is a priority.

Table 3 on page 18 shows the population by age group. Berkshire County has a 39.8% elderly population (55+). It is more than the Massachusetts state average of 31.2%. Of this 39.8% elderly population (55+), Pittsfield has the highest percentage, 31.3% of all elderly population (55+) in Berkshire County, followed by North Adams (8.6%), Adams (6.3%), Great Barrington (5.8%), Dalton (5.3%), and Lenox (5.2%).

Table 5 on the next page shows the percentage changes in the elderly population from 2010 to 2021 in Berkshire County communities. In Berkshire County, the elderly population of 55+ increased by 17%, Washington has the highest percentage increase of the elderly population, and in West Stockbridge aging population of 55+ decreased by 22%.

It is important to note that the percentage increases of elderly are highest in the smaller, more remote towns, which will create an increased need to service these areas.



Table 5: Percentage changes in the elderly population from 2010 to 2021

Communities	2010 Elderly Population 55 and Over	2021 Elderly Population 55 and Over	Change in People for Age Group 55 to 64	% Change from 2010 to 2021 Age Group 55 to 64	Change in People for Age Group 65 to 74	% Change from 2010 to 2021 Age Group 65 to 74	Change in People for Age Group 75 to 84	% Change from 2010 to 2021 Age Group 75 to 84	Change in People for Age Group 85 and Over	% Change from 2010 to 2021 Age Group 85 and over	Number of People Change for Total Age Group 55 and Over	% Change from 2010 to 2021 Total of Ages 55 and over	Rank by Highest % Increase from 2010 to 2021 Total Ages 55 and Over
Adams	2,798	3,247	181	15.0%	325	44.1%	-110	-19.7%	53	17.8%	449	16.0%	21
Alford	253	286	-25	-21.9%	22	23.2%	20	74.1%	16	94.1%	33	13.0%	25
Becket	608	795	74	23.7%	114	57.9%	4	4.9%	-5	-29.4%	187	30.8%	8
Cheshire	1,079	1,457	89	16.2%	274	92.9%	8	4.6%	7	11.9%	378	35.0%	6
Clarksburg	557	695	11	4.3%	72	45.3%	25	21.6%	30	120.0%	138	24.8%	12
Dalton	2,206	2,733	177	17.9%	308	56.3%	-30	-6.8%	72	31.4%	527	23.9%	13
Egremont	574	563	-41	-15.6%	5	2.8%	13	12.1%	12	44.4%	-11	-1.9%	30
Florida	225	320	67	65.7%	23	31.1%	-13	-33.3%	18	180.0%	95	42.2%	3
Great Barrington	2,500	2,989	78	6.5%	438	71.1%	-48	-11.2%	21	8.4%	489	19.6%	17
Hancock	255	305	18	14.5%	51	69.9%	-16	-35.6%	-3	-23.1%	50	19.6%	16
Hinsdale	684	778	38	11.6%	2	0.9%	37	35.6%	17	45.9%	94	13.7%	23
Lanesborough	999	1,417	189	39.0%	213	68.1%	32	23.4%	-16	-25.0%	418	41.8%	5
Lee	2,049	2,396	-114	-12.7%	206	35.6%	245	65.2%	10	5.0%	347	16.9%	19
Lenox	2,218	2,666	-22	-2.8%	362	68.3%	114	24.8%	-6	-1.4%	448	20.2%	15
Monterey	432	521	-89	-41.4%	13	10.1%	24	32.9%	141	940.0%	89	20.6%	14
Mount Washington	73	92	12	41.4%	-7	-20.6%	12	171.4%	2	66.7%	19	26.0%	10
New Ashford	83	118	15	31.9%	3	13.0%	14	175.0%	3	60.0%	35	42.2%	4
New Marlborough	575	644	-19	-6.9%	29	15.8%	47	54.0%	12	38.7%	69	12.0%	26
North Adams	3,898	4,419	233	14.3%	443	42.8%	-153	-18.4%	-2	-0.5%	521	13.4%	24
Otis	588	644	-10	-3.4%	-16	-8.6%	76	97.4%	6	21.4%	56	9.5%	27
Peru	226	283	-9	-6.1%	79	154.9%	-2	-14.3%	-11	-84.6%	57	25.2%	11
Pittsfield	13,747	16,060	1,484	25.2%	1,305	36.3%	-282	-9.8%	-194	-13.8%	2,313	16.8%	20
Richmond	653	755	-21	-6.7%	98	46.4%	25	24.5%	0	0.0%	102	15.6%	22
Sandisfield	365	376	-55	-29.9%	8	7.0%	29	60.4%	29	161.1%	11	3.0%	28
Savoy	237	303	-45	-31.3%	93	163.2%	0	0.0%	18	200.0%	66	27.8%	9
Sheffield	1,179	1,571	-58	-10.6%	384	112.0%	67	32.7%	-1	-1.2%	392	33.2%	7
Stockbridge	927	1,087	-73	-17.5%	198	69.7%	20	12.8%	15	21.7%	160	17.3%	18
Tyringham	181	266	23	25.6%	32	55.2%	18	69.2%	12	171.4%	85	47.0%	2
Washington	209	309	-25	-17.9%	102	242.9%	19	82.6%	4	100.0%	100	47.8%	1
West Stockbridge	578	451	-112	-35.8%	50	34.0%	-49	-57.0%	-16	-50.0%	-127	-22.0%	32
Williamstown	2,595	2,462	-208	-20.9%	286	41.0%	-66	-12.9%	-145	-37.0%	-133	-5.1%	31
Windsor	326	329	-34	-16.1%	56	80.0%	-8	-28.6%	-11	-64.7%	3	0.9%	29
<b>Berkshire County</b>	<b>43,877</b>	<b>51,337</b>	<b>1,729</b>	<b>8.9%</b>	<b>5,571</b>	<b>46.9%</b>	<b>72</b>	<b>0.9%</b>	<b>88</b>	<b>2.1%</b>	<b>7,460</b>	<b>17.0%</b>	
Massachusetts	1,706,093	2,179,943	160,127	19.9%	274,325	60.1%	35,711	11.9%	3,687	2.5%	473,850	27.8%	

Source: US Census Bureau Decennial Census 2010, American Community Survey 2017-2021

People with disabilities are another significant population to be considered when developing a coordinated public transit system. Table 6 on the next page shows the number of people with disabilities in Berkshire County communities. In Berkshire County, 14.9% of the total population has a disability. It is more than the Massachusetts state average of 11.6%. Types of disabilities range from hearing and vision difficulty to ambulatory difficulty.

Sixteen Berkshire County communities are above the Massachusetts state average of 11.6%. Of these, nine communities: Adams, Alford, Cheshire, Clarksburg, Dalton, Florida, North Adams, Pittsfield, and Stockbridge, are above the Berkshire County average of 14.9%. Stockbridge has the highest at 20.8%, followed by North Adams at 17.8%.and Pittsfield at 17.7%.



Table 6: People with Disabilities

Communities	Population Under 18						Population 18 to 64						Population 65 Years and Over						Total All Ages with Disabilities	2021 Population	% of Total Population with Disabilities
	Types of Disabilities						Types of Disabilities						Types of Disabilities								
	Hearing	Vision	Cognitive	Ambulatory	Self-Care	Total	Hearing	Vision	Cognitive	Ambulatory	Self-Care	Total	Hearing	Vision	Cognitive	Ambulatory	Self-Care	Total			
Adams	0	3	60	0	0	63	71	57	291	334	184	688	246	87	123	320	37	553	1,304	8,161	16.0%
Alford	0	0	0	0	0	0	2	9	0	0	0	11	27	2	11	36	20	62	73	465	15.7%
Becket	0	0	6	0	0	6	46	6	78	68	26	151	57	12	34	43	13	89	246	2,152	11.4%
Cheshire	0	0	22	0	0	22	66	0	100	103	44	259	128	18	41	114	20	252	533	3,226	16.5%
Clarksburg	0	0	19	0	6	19	36	12	54	36	30	138	89	32	11	73	10	139	296	1,750	16.9%
Dalton	0	0	0	0	0	0	35	31	125	302	108	517	146	54	162	220	87	480	997	6,265	15.9%
Egremont	0	0	5	0	5	5	11	14	37	34	19	76	51	5	20	27	8	76	157	1,521	10.3%
Florida	0	0	7	0	0	7	2	16	24	25	5	50	20	5	19	46	19	69	126	783	16.1%
Great Barrington	0	0	19	0	0	19	0	16	88	101	39	167	222	73	109	221	148	417	603	6,792	8.9%
Hancock	0	0	3	0	3	9	0	2	17	24	10	36	12	2	17	23	0	26	71	749	9.5%
Hinsdale	0	0	0	0	0	0	0	5	104	19	21	138	19	10	22	55	18	67	205	1,866	11.0%
Lanesborough	0	0	53	0	11	53	23	32	43	113	2	163	11	11	73	48	32	141	357	3,043	11.7%
Lee	0	23	53	13	13	76	43	33	169	108	30	287	252	122	102	105	76	409	772	5,638	13.7%
Lenox	0	0	0	0	0	0	60	1	52	35	64	143	203	16	102	283	114	507	650	4,800	13.5%
Monterey	0	0	0	0	0	0	0	0	4	0	0	22	10	6	25	35	22	50	72	793	9.1%
Mount Washington	0	0	0	0	0	0	0	0	2	4	0	6	1	0	0	9	0	11	17	161	10.6%
New Ashford	0	0	0	0	0	0	2	2	5	8	4	16	12	0	7	16	6	17	33	223	14.8%
New Marlborough	0	0	46	0	0	46	11	12	16	7	0	45	45	14	26	54	6	79	170	1,573	10.8%
North Adams	16	31	144	16	16	151	204	117	571	425	147	1,101	523	292	191	588	195	1,050	2,302	12,936	17.8%
Otis	0	0	13	0	0	13	14	4	25	32	18	62	36	4	12	69	26	86	161	1,460	11.0%
Peru	0	3	3	0	0	6	9	3	30	17	8	49	22	0	2	25	3	36	91	744	12.2%
Pittsfield	94	42	469	22	30	591	929	692	2,411	1,737	931	4,420	1,033	560	607	1,755	682	2,651	7,662	43,203	17.7%
Richmond	0	0	0	0	0	0	17	0	16	21	11	55	30	11	16	35	27	76	131	1,468	8.9%
Sandisfield	0	9	15	13	13	15	4	12	25	14	3	46	17	15	14	47	16	60	121	852	14.2%
Savoy	0	0	5	0	0	5	2	7	0	9	0	11	19	5	7	11	2	23	39	701	5.6%
Sheffield	0	0	25	0	0	25	27	3	41	25	10	85	146	46	10	168	41	251	361	3,318	10.9%
Stockbridge	0	0	0	0	0	0	0	0	89	74	8	128	100	40	51	129	31	244	372	1,792	20.8%
Tyringham	0	0	0	0	0	2	14	4	1	11	0	25	14	5	8	7	1	22	49	541	9.1%
Washington	0	0	4	0	0	4	2	0	0	8	6	10	19	3	9	24	4	41	55	501	11.0%
West Stockbridge	0	0	3	0	0	3	4	16	48	20	12	72	36	4	19	58	32	84	159	1,164	13.7%
Williamstown	0	0	9	0	1	9	50	37	189	20	18	237	211	60	113	215	56	480	726	7,468	9.7%
Windsor	0	0	1	0	0	1	10	0	35	8	0	52	9	3	9	19	6	23	76	984	7.7%
<b>Berkshire County</b>	<b>110</b>	<b>111</b>	<b>984</b>	<b>64</b>	<b>98</b>	<b>1,150</b>	<b>1,694</b>	<b>1,143</b>	<b>4,690</b>	<b>3,742</b>	<b>1,758</b>	<b>9,266</b>	<b>3,766</b>	<b>1,517</b>	<b>1,972</b>	<b>4,878</b>	<b>1,758</b>	<b>8,571</b>	<b>18,987</b>	<b>127,093</b>	<b>14.9%</b>
Massachusetts	6,986	9,509	50,126	5,953	10,982	64,995	65,823	61,807	197,126	153,552	64,160	393,175	142,844	54,962	83,178	210,192	80,972	345,430	803,600	6,922,305	11.6%

Source: US Census Bureau American Community Survey 2017-2021

## **Social and Economic Characteristics of Berkshire County Communities**

The following section provides insight into the socio-economics of Berkshire County. Persons with limited income or those living in poverty tend to rely highly on public transportation. These individuals and the unemployed are impacted most when gasoline prices increase.

Figure 6 on the next page shows the unemployment rate in Berkshire County Communities. This data is derived from 2021 Massachusetts Department of Labor and Workforce Development (LWD) data. The communities highlighted in red have an unemployment rate higher than the state average of 5.5%.

Figure 6: Unemployment Rate

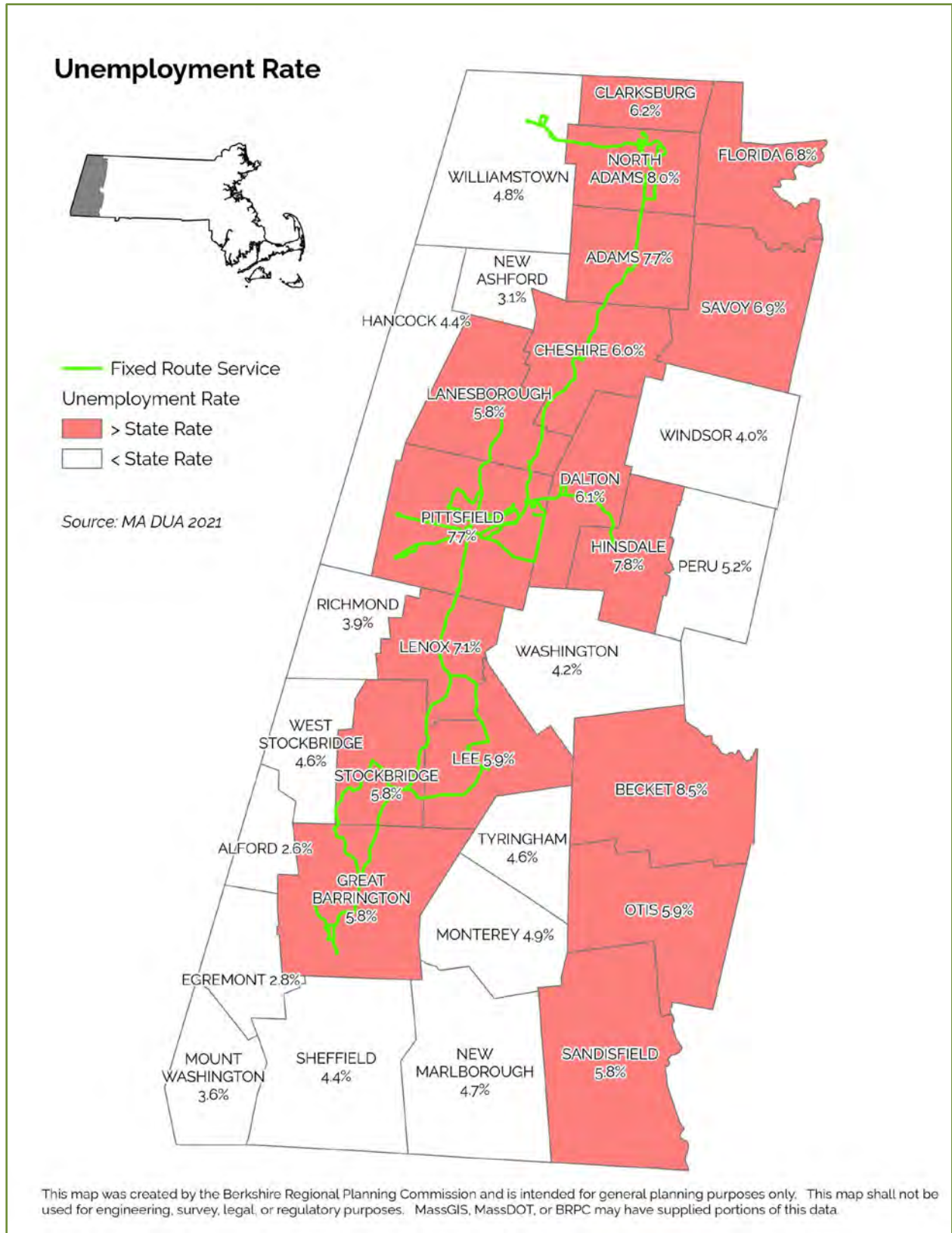




Figure 7 shows the percentage of people below the poverty level in Berkshire County Communities. The communities highlighted in red have a 10.1 or higher percentage of people below the poverty level.

Figure 7: People below the Poverty Level

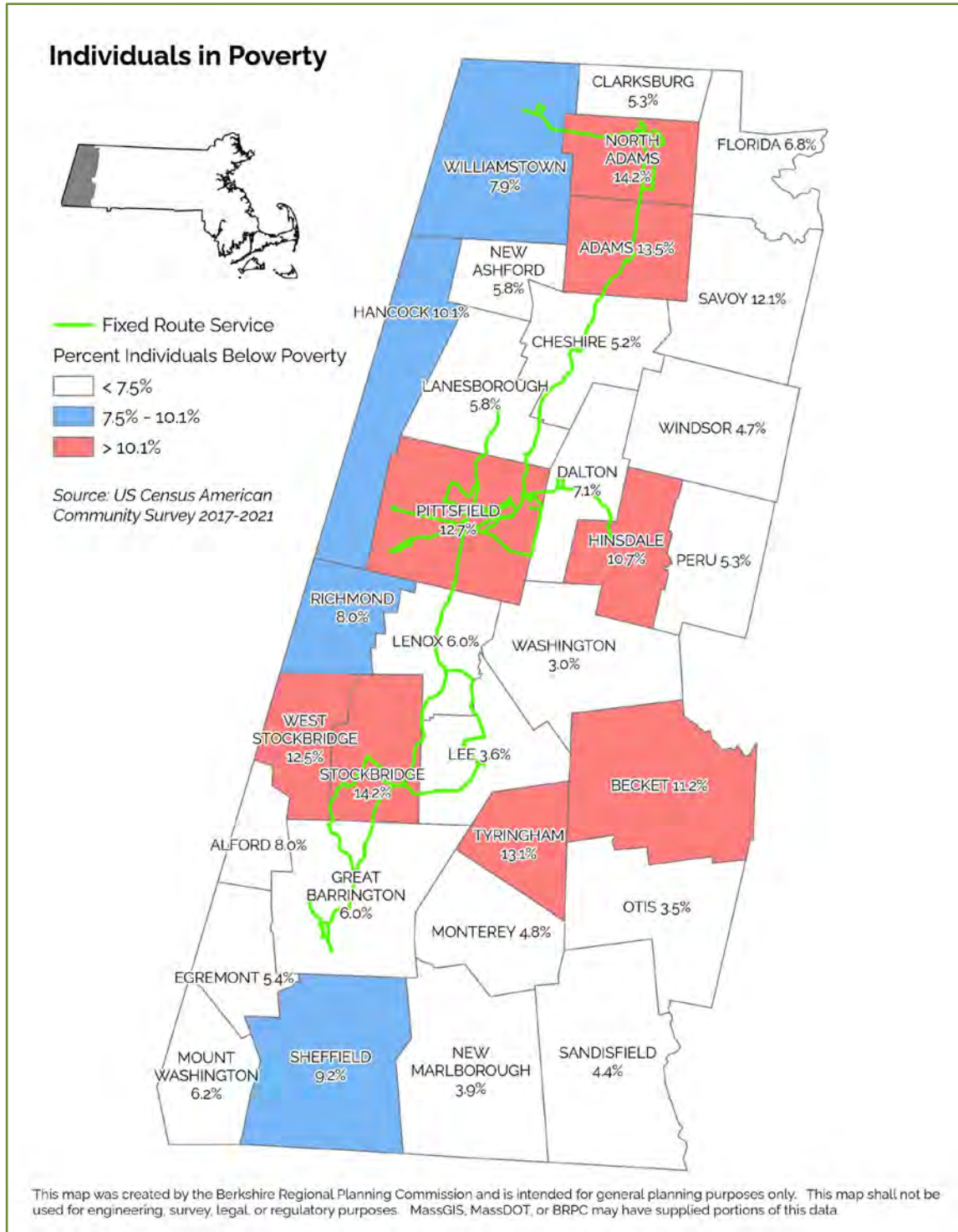


Figure 8 shows the percentage of households receiving Public Assistance in Berkshire County Communities. The towns highlighted in red have a 3.7 or higher percentage of households receiving public assistance.

Figure 8: Households Receiving Public Assistance

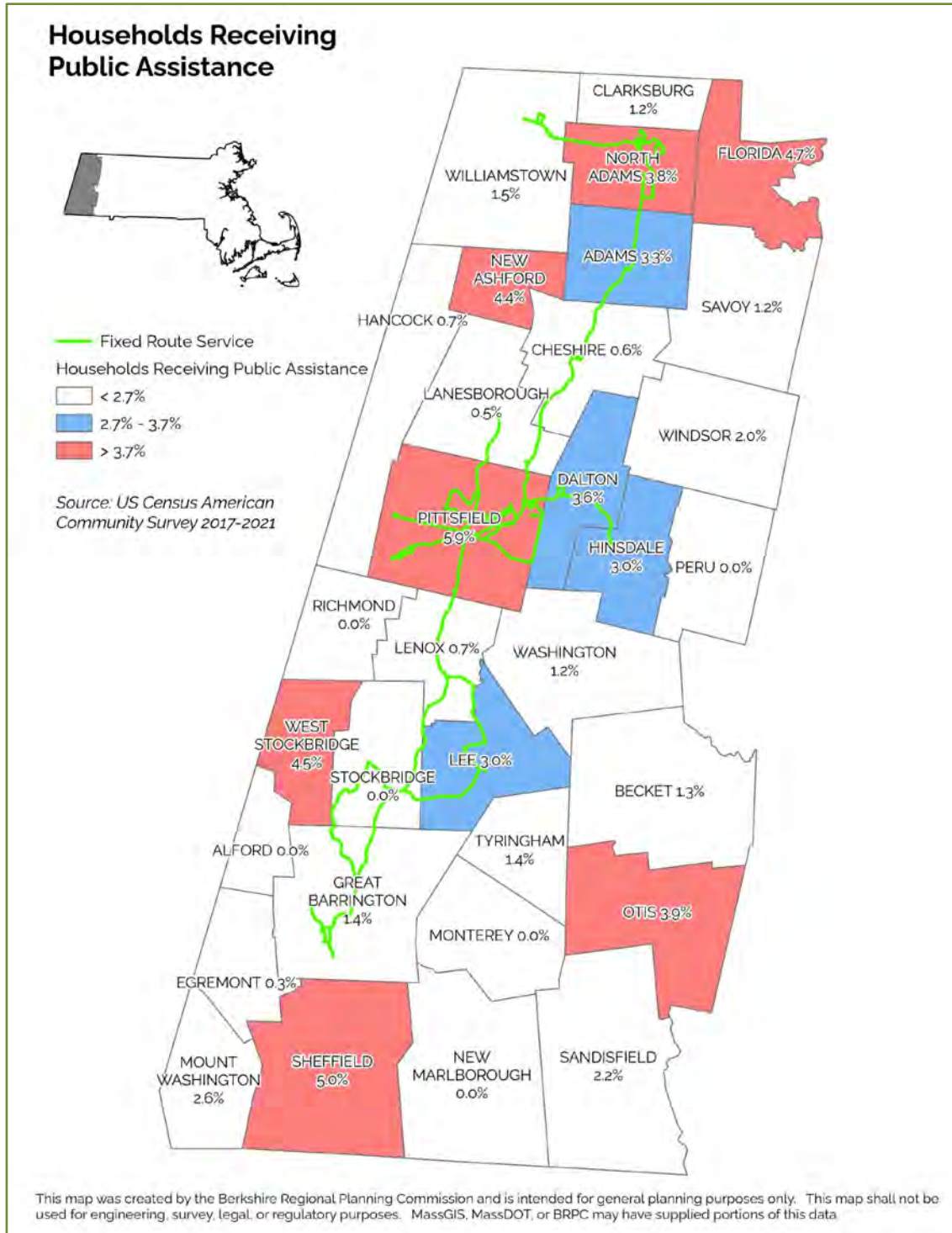


Table 7 shows a county-wide tabulation by the municipality, highlighting the following parameters: population, unemployment, poverty, public assistance, and which transportation service is provided.

Table 7

Communities	2021 Population	Unemployment Rate (2021 Annual Rate - MA)	Percent of Individuals below poverty (2017-2021 ACS)	Households Receiving Public Assistance (2017-2021 ACS)	Towns Served
Adams	8,161	7.7%	13.5%	3.3%	BRTA
Alford	465	2.6%	8.0%	0.0%	
Becket	2,152	8.5%	11.2%	1.3%	
Cheshire	3,226	6.0%	5.2%	0.6%	BRTA
Clarksburg	1,750	6.2%	5.3%	1.2%	
Dalton	6,265	6.1%	7.1%	3.6%	BRTA
Egremont	1,521	2.8%	5.4%	0.3%	
Florida	783	6.8%	6.8%	4.7%	
Great Barrington	6,792	5.8%	6.0%	1.4%	BRTA
Hancock	749	4.4%	10.1%	0.7%	
Hinsdale	1,866	7.8%	10.7%	3.0%	BRTA
Lanesborough	3,043	5.8%	5.8%	0.5%	BRTA
Lee	5,638	5.9%	3.6%	3.0%	BRTA
Lenox	4,800	7.1%	6.0%	0.7%	BRTA
Monterey	793	4.9%	4.8%	0.0%	
Mount Washington	161	3.6%	6.2%	2.6%	
New Ashford	223	3.1%	5.8%	4.4%	
New Marlborough	1,573	4.7%	3.9%	0.0%	
North Adams	12,936	8.0%	14.2%	3.8%	BRTA
Otis	1,460	5.9%	3.5%	3.9%	
Peru	744	5.2%	5.3%	0.0%	
Pittsfield	43,203	7.7%	12.7%	5.9%	BRTA
Richmond	1,468	3.9%	8.0%	0.0%	
Sandisfield	852	5.8%	4.4%	2.2%	
Savoy	701	6.9%	12.1%	1.2%	
Sheffield	3,318	4.4%	9.2%	5.0%	
Stockbridge	1,792	5.8%	14.2%	0.0%	BRTA
Tyringham	541	4.6%	13.1%	1.4%	
Washington	501	4.2%	3.0%	1.2%	
West Stockbridge	1,164	4.6%	12.5%	4.5%	
Williamstown	7,468	4.8%	7.9%	1.5%	BRTA
Windsor	984	4.0%	4.7%	2.0%	
Berkshire County	127,093	6.7%	10.1%	3.6%	
Massachusetts	6,922,305	5.5%	9.9%	3.2%	

<b>Unemployment</b>	< State Rate	Equal to State Rate	> State Rate
<b>Poverty</b>	< 7.5%	7.5% - 10.1%	> 10.1%
<b>Public Assistance</b>	< 2.7%	2.7% - 3.7%	> 3.7%

Source: US Census Bureau American Community Survey 2017-2021, MA Department of Labor and Workforce Development



Through data analysis regarding population, unemployment, poverty, and need for public assistance, Pittsfield and North Adams are the focus areas in need of public transit, followed by several other towns: Adams, Becket, Florida, Hinsdale, Otis, Savoy, Stockbridge, and West Stockbridge. Throughout the County, unmet needs exist, especially in regard to the provision of transport to work.

Table 8 lists statistics documenting Berkshire County's employment base and mobility by way of vehicle ownership per household.

Households with no vehicle depend highly on public transportation or friends with vehicles to get to employment or do daily work. We need to consider this essential population group while developing a coordinated public transit plan.

In Berkshire County, 65.7% of households have one or more person working. Of this, 65.7% of households with one or more person working, 2.3% do not own any vehicle. Mount Washington has the highest percentage, 6.5% of households with one or more person working, with no vehicle (this could be due to data reporting error), followed by Williamstown (3.7%), Great Barrington (3.6%), Pittsfield (3.5%), and North Adams (3.5%).

Six Berkshire County communities: Stockbridge, North Adams, Adams, Savoy, Pittsfield, and Becket, are below the county average median household income of \$63,159. Stockbridge has the lowest median household income of \$46,458 in Berkshire County. Twenty-four Berkshire County communities are below the Massachusetts state average median household income of \$89,026.

Table 8: Employment and Vehicle Ownership per Household

Communities	2021 Population	Households	Total Households			Total HHs with one or more Workers	Total HHs with one or more Workers			% of Total HHs with one or more Workers	% of Total HHs with one or more Workers with No Vehicle	Median Household Income	Households < \$50K	% of Households < \$50K
			No Vehicle	1 Vehicle	2 or more vehicles		No Vehicle	1 Vehicle	2 or more vehicles					
Adams	8,161	3,948	563	1,580	1,805	2,260	86	759	1,415	57.2%	2.2%	\$49,691	1,982	50.20%
Alford	465	220	0	72	148	111	0	22	89	50.5%	0.0%	\$106,944	46	21.00%
Becket	2,152	974	16	276	682	642	0	162	480	65.9%	0.0%	\$60,833	367	37.70%
Cheshire	3,226	1,509	56	482	971	984	11	189	784	65.2%	0.7%	\$69,069	481	31.90%
Clarksburg	1,750	729	33	281	415	518	2	163	353	71.1%	0.3%	\$67,292	243	33.30%
Dalton	6,265	2,907	54	1,296	1,557	1,940	19	709	1,212	66.7%	0.7%	\$72,664	860	29.60%
Egremont	1,521	591	0	212	379	466	0	146	320	78.8%	0.0%	\$79,946	162	27.40%
Florida	783	318	11	85	222	216	7	24	185	67.9%	2.2%	\$74,333	94	29.50%
Great Barrington	6,792	3,096	256	1,290	1,550	2,156	110	734	1,312	69.6%	3.6%	\$65,192	1,186	38.30%
Hancock	749	296	13	104	179	230	3	80	147	77.7%	1.0%	\$74,167	114	38.60%
Hinsdale	1,866	779	20	252	507	532	9	101	422	68.3%	1.2%	\$65,911	323	41.40%
Lanesborough	3,043	1,368	0	485	883	1,020	0	276	744	74.6%	0.0%	\$75,156	479	35.00%
Lee	5,638	2,306	93	884	1,329	1,631	0	392	1,239	70.7%	0.0%	\$73,750	669	29.00%
Lenox	4,800	2,211	236	849	1,126	1,162	17	382	763	52.6%	0.8%	\$71,117	754	34.10%
Monterey	793	369	0	110	259	276	0	57	219	74.8%	0.0%	\$116,406	100	27.00%
Mount Washington	161	77	5	12	60	53	5	2	46	68.8%	6.5%	\$92,917	21	27.30%
New Ashford	223	90	4	17	69	60	0	8	52	66.7%	0.0%	\$68,500	28	31.10%
New Marlborough	1,573	652	10	207	435	461	6	123	332	70.7%	0.9%	\$73,571	219	33.60%
North Adams	12,936	5,540	681	2,346	2,513	3,450	196	1,247	2,007	62.3%	3.5%	\$48,575	2,836	51.20%
Otis	1,460	694	2	237	455	446	0	87	359	64.3%	0.0%	\$93,316	189	27.20%
Peru	744	325	13	92	220	271	8	69	194	83.4%	2.5%	\$74,464	94	28.80%
Pittsfield	43,203	19,290	2,953	7,686	8,651	12,699	680	4,670	7,349	65.8%	3.5%	\$59,522	8,295	43.00%
Richmond	1,468	628	5	170	453	460	0	107	353	73.2%	0.0%	\$94,375	174	27.70%
Sandisfield	852	318	14	88	216	232	3	58	171	73.0%	0.9%	\$80,179	85	26.80%
Savoy	701	330	7	90	233	200	5	34	161	60.6%	1.5%	\$51,250	163	49.40%
Sheffield	3,318	1,456	78	444	934	921	12	239	670	63.3%	0.8%	\$71,818	472	32.40%
Stockbridge	1,792	811	31	403	377	427	0	149	278	52.7%	0.0%	\$46,458	408	50.30%
Tyringham	541	207	0	55	152	151	0	32	119	72.9%	0.0%	\$112,083	40	19.30%
Washington	501	246	0	60	186	176	0	33	143	71.5%	0.0%	\$79,375	80	32.50%
West Stockbridge	1,164	488	13	173	302	361	4	77	280	74.0%	0.8%	\$83,571	165	33.90%
Williamstown	7,468	2,360	177	913	1,270	1,657	87	573	997	70.2%	3.7%	\$95,682	717	30.40%
Windsor	984	392	0	94	298	336	0	71	265	85.7%	0.0%	\$99,063	94	23.90%
<b>Berkshire County</b>	<b>127,093</b>	<b>55,525</b>	<b>5,344</b>	<b>21,345</b>	<b>28,836</b>	<b>36,505</b>	<b>1,270</b>	<b>11,775</b>	<b>23,460</b>	<b>65.7%</b>	<b>2.3%</b>	<b>\$63,159</b>	<b>21,932</b>	<b>39.50%</b>
Massachusetts	6,922,305	2,714,448	327,649	955,794	1,431,005	2,036,182	143,449	633,292	1,259,441	75.0%	5.3%	\$89,026	808,906	29.80%

Source: US Census Bureau American Community Survey 2017-2021



Table 9 documents the "Means of Travel to Work" characteristics of Berkshire County Communities.

In Berkshire County, 83.5% of the population use their personal automobile to go to work. 5.8% walk to work. Only 1.3% use public transportation to go to work. 8.4% of the population works from home. Most of the south county communities have high percentages of people working from home. Residents of communities bordering the state of New York, Connecticut, and Vermont may use public transportation in towns of bordering states to go to work.

Table 9: Means of Travel to Work

Communities	Total Workers	Means of travel to Work					Worked at Home	Median Household Income
		Car, Truck, or Van	Public Transportation	Walked	Bicycle	Taxicab, motorcycle, or other means		
Adams	3,817	90.7%	0.40%	1.80%	0.50%	0.40%	6.20%	\$49,691
Alford	193	83.9%	3.10%	2.10%	0.00%	1.60%	9.30%	\$106,944
Becket	1,135	86.3%	1.00%	2.60%	0.80%	0.40%	9.00%	\$60,833
Cheshire	1,473	91.9%	0.00%	3.80%	0.00%	0.00%	4.30%	\$69,069
Clarksburg	907	95.1%	0.10%	1.40%	0.00%	0.00%	3.30%	\$67,292
Dalton	2,977	94.7%	2.30%	0.00%	0.40%	0.00%	2.70%	\$72,664
Egremont	872	79.8%	0.20%	1.90%	0.00%	0.00%	18.00%	\$79,946
Florida	386	94.6%	0.00%	0.00%	0.00%	0.00%	5.40%	\$74,333
Great Barrington	3,543	69.8%	0.50%	10.80%	2.10%	0.00%	16.80%	\$65,192
Hancock	365	91.0%	0.00%	0.00%	0.00%	3.60%	5.50%	\$74,167
Hinsdale	838	99.6%	0.00%	0.00%	0.00%	0.00%	0.40%	\$65,911
Lanesborough	1,588	89.7%	0.60%	5.70%	0.00%	0.00%	3.90%	\$75,156
Lee	2,927	91.7%	0.40%	2.50%	0.00%	0.00%	5.40%	\$73,750
Lenox	1,987	77.7%	2.10%	1.40%	0.90%	0.00%	17.90%	\$71,117
Monterey	359	76.9%	1.10%	0.80%	0.00%	7.20%	13.90%	\$116,406
Mount Washington	90	82.2%	0.00%	2.20%	0.00%	0.00%	15.60%	\$92,917
New Ashford	135	85.9%	0.00%	1.50%	0.00%	1.50%	11.10%	\$68,500
New Marlborough	709	58.7%	5.60%	0.80%	1.00%	0.00%	33.90%	\$73,571
North Adams	5,980	80.9%	1.10%	11.00%	0.20%	0.10%	6.70%	\$48,575
Otis	777	82.0%	2.60%	1.20%	0.00%	0.00%	14.30%	\$93,316
Peru	458	97.2%	0.00%	0.90%	0.00%	0.20%	1.70%	\$74,464
Pittsfield	20,895	88.0%	2.10%	2.70%	0.30%	0.90%	6.10%	\$59,522
Richmond	797	90.2%	0.00%	0.80%	0.00%	0.00%	9.00%	\$94,375
Sandisfield	430	79.3%	0.00%	0.70%	0.00%	0.00%	20.00%	\$80,179
Savoy	325	95.7%	0.00%	2.20%	0.00%	0.90%	1.20%	\$51,250
Sheffield	1,808	86.8%	0.00%	3.70%	0.00%	1.50%	8.00%	\$71,818
Stockbridge	694	60.4%	0.90%	19.90%	0.00%	0.00%	18.90%	\$46,458
Tyringham	300	77.0%	1.70%	8.00%	0.00%	1.00%	12.30%	\$112,083
Washington	254	81.9%	0.80%	2.40%	0.00%	1.20%	13.80%	\$79,375
West Stockbridge	605	79.0%	0.00%	0.00%	0.00%	0.00%	21.00%	\$83,571
Williamstown	3,647	46.3%	0.70%	36.00%	1.10%	1.90%	14.00%	\$95,682
Windsor	574	87.5%	0.00%	0.00%	0.00%	1.20%	11.30%	\$99,063
<b>Berkshire County</b>	<b>61,845</b>	<b>83.5%</b>	<b>1.30%</b>	<b>5.80%</b>	<b>0.40%</b>	<b>0.60%</b>	<b>8.40%</b>	<b>\$63,159</b>
Massachusetts	3,591,598	73.0%	8.40%	4.60%	0.80%	1.40%	11.90%	\$89,026

Source: US Census Bureau American Community Survey 2017-2021

## C) ANALYSIS AND EVALUATION CRITERIA

The demographic information presented in the previous chapter was utilized to determine the locations of population groups that would benefit from enhancements to public transportation. This information, combined with input received through various public meetings, current transportation providers, and organizations representing clientele having a reliance on public transit, formed the basis for developing candidate strategies to be considered for implementation. Additionally, existing service characteristics were evaluated to determine potential service improvements.

The priorities presented in the following section were derived as a result of an analysis that evaluated demographic changes and needs assessment service improvements. In general terms, the priorities focus on expanding transit and para-transit services, enhancements to fixed routes, vehicle upgrades, and incorporating new technology into operations. The following section provides more elaboration on the priorities.

With respect to multiple applications for funding consideration, the key criteria for evaluation are cost per user trip and distance to a point accessing the service area.

## D) POTENTIAL STRATEGIES

Section 5310 grants are intended to enhance the mobility for seniors and persons with disabilities by providing funds for programs to serve the special needs of transit-dependent populations beyond traditional public transportation services and the Americans with Disabilities Act complementary para-transit services.

Funds may be used for capital and operating expenses for projects that support transportation to meet the special needs of older adults and persons with disabilities – as evidenced by the following eligible activities - application for Section 5310 grants is vital and will provide for:

- Projects planned, designed, and carried out to meet the special needs of seniors and persons with disabilities when public transportation is insufficient, inappropriate, or unavailable;
- Projects that exceed the requirements of the ADA;
- Projects that improve access to fixed-route service and decrease reliance on complementary para-transit;
- Alternatives to public transportation projects that assist seniors and individuals with disabilities with transportation.

### Project examples:

- Vehicles and vehicle-related expenses, including: Buses; Vans; Radios and communication equipment; Vehicle shelters; Wheelchair lifts and restraints; Vehicle rehabilitation, manufacture, or overhaul;

- Lease of equipment when the lease is more cost-effective than a purchase;
- Computer hardware and software;
- Vehicle procurement, testing, inspection, and acceptance costs;
- Acquisition of transportation services under a contract, lease, or other arrangement;
- The introduction of new technology into public transportation;
- Transit-related intelligent transportation systems (ITS);
- Supporting new mobility management and coordination programs among public transportation providers and other human service agencies providing transportation;
- Expansion of para-transit service parameters beyond the ¾ mile required by the ADA;
- Expansion of current hours of operation for para-transit services that are beyond those provided by the fixed route service;
- Provision of same-day service;
- Provision of escorts/assisting riders to enhance the level of service to those who need it;
- Acquisition of vehicles and equipment designed to accommodate mobility aids that exceed ADA-established parameters;
- Installation of additional securement locations in public busses beyond that which is required by ADA;
- Expansion of provision of feeder services by which people are provided access to public transit;
- Provision of accessibility enhancements (e.g., accessible curb-cuts, sidewalks and pedestrian signals, elevators, ramps, improved signing, etc.);
- Purchase and operation of accessible vehicles that support use by special needs passengers;
- Support and administration of voucher programs for transportation services offered by human service providers;
- Support of new volunteer driver and aide programs;
- Support of new mobility management and coordination programs among public transportation providers and other human service agencies providing transportation;
- Promotion of the use of transit by workers with nontraditional work schedules through the provision of late-night and weekend public transit services;
- Promotion of shuttle service.

## E) PRIORITIES FOR IMPLEMENTATION

### 1) Berkshire County

The priorities for Berkshire County are as follows:

- Modify/expand fixed route service to major employment centers similar to the circulator routes 12/14 in Pittsfield;
- Promote the use of transit by workers with both traditional and nontraditional work schedules through the provision of late-night & weekend public transit services; provide travel training to increase access to existing transportation services;
- Improve fixed route service by partially reducing headways during peak periods, offering

weekend hours and Sunday service;

- Expand service in underserved communities in Berkshire County, consider discounted fare cards for life-sustaining medical treatment and those who do not qualify for MassHealth transportation;
- Expand services for seniors, disabled population, and veterans (assist nonprofit organizations with accessing operating costs to expand transportation services, provide travel training to increase access to existing transportation services);
- Reduce quantity and size of gaps in the transit needs: availability ratio (encourage smaller communities to join BRTA);
- Encourage employers to provide transportation subsidies, with special attention given to health care providers;
- Help coordinate social service public transportation providers (e.g., encourage Council On Aging (COAs) in smaller communities to share vehicles and resources and regionalize transportation system);
- Help public, private, and nonprofit human services transportation providers to acquire and operate accessible taxis;
- Creating a resource for social service agencies to create affordable transportation for special events and programs;
- Provide language translation and hearing/vision impaired resources for transportation services County-wide;
- Leverage Transportation Network Companies (TNCs) to increase on-demand mobility (e.g., Uber and Lyft);
- Explore funding for On-demand/ microtransit service and first-mile/last-mile transportation;
- Explore the possibility of bike-share kiosks and other alternate modes of transportation.

## 2) BRTA priorities

### BRTA will utilize funding for fixed route operations to:

- Local, regional circulator loops with 30-minute headways (reduced from hourly service) within the three distinct areas of Berkshire County: North, Central, and South. The North and South regional areas would be interconnected via larger fixed-route express buses to Pittsfield. A deviated service would be offered to reduce para-transit costs.
- Expand additional evening hours on weekdays, add evening hours on Saturdays, and implement service hours on Sundays. This is all tied to increased state and federal funding levels.

- Continue the Bus Stop Program in communities with fixed route service.
- Continue to review fixed routes and make adjustments to current routes for better connections and increased frequency.
- Interconnect with FRTA and PVTA via Route 9.
- Research alternative fuel vehicles appropriate for BRTA and Berkshire County. Zero emission buses/alternative fuel vehicles with the capacity to run for the majority of the day without refueling while maintaining fleet size. Establish satellite Facilities in North and South Berkshire County to support fleet/service expansion.
- Explore microtransit, first mile, and last mile service to bus stops and increase fixed route bus frequency.
- Install solar collection panels at the Maintenance Facility on Downing Parkway to reduce BRTA's energy costs.

#### **CONCLUSION:**

Through a strong commitment to all populations and individuals, including disabled, elderly, and low-income individuals, Berkshire County and its transportation providers are engaged in creative and innovative means of providing service and associated alternatives beyond the requirements of the Americans with Disabilities Act. Implementation of the recommendations and priorities contained herein will improve the mobility of Berkshire County residents in a cost-efficient manner.



# APPENDIX A



## Berkshire County Transportation Guide Berkshires without Barriers Berkshire County, MA (December 2022)



### BUS SERVICES

Provider	Rider Eligibility	Service Area	Days/Hours of Service	Provider Address	Phone	Email	Website
Berkshire Regional Transit Authority (BRTA)	general public and disabled	County Wide	Mon-Fri 5:15am-7:20pm, Sat 7:15am-7:30pm	1 Columbus Avenue, Pittsfield, MA - 01201	413-499-2782	<a href="mailto:info@berkshirerta.com">info@berkshirerta.com</a>	<a href="http://www.berkshirerta.com">www.berkshirerta.com</a>
Peter Pan/Greyhound Bus Lines	general public	Central & South County	7 days, 7:30am-8:20pm, 7 buses per day	1 Columbus Avenue, Pittsfield, MA - 01201	1-800-231-2222 or 413-499-2782		<a href="http://www.peterpanbus.com">www.peterpanbus.com</a>

### TRAINS

Provider	Rider Eligibility	Service Area	Days/Hours of Service	Provider Address	Phone	Email	Website
Amtrak Train Service	general public	Pittsfield	7 days, 2 trains per day	1 Columbus Avenue, Pittsfield, MA - 01201	1-800-872-7245		<a href="http://www.amtrak.com">www.amtrak.com</a>

### MEDICAL TRANSPORT SERVICES

Provider	Rider Eligibility	Service Area	Days/Hours of Service	Provider Address	Phone	Email	Website
Action Ambulance Service	general public, medical	County Wide	24/7	121 West Housatonic Street, Pittsfield, MA - 01201	413-445-5355	<a href="mailto:jscoloro@actionems.com">jscoloro@actionems.com</a>	<a href="http://www.actionems.com">www.actionems.com</a>
County Ambulance Inc.	general public, medical	County Wide	5am-10pm	175 Wahconah Street, Pittsfield, MA - 01201	413-499-2527	<a href="mailto:bkandrews@countyamb.com">bkandrews@countyamb.com</a>	<a href="http://www.countyamb.com">www.countyamb.com</a>
County Rainbow Taxi, Inc/ Arrow taxi	general public, able bodied, medical	County Wide	24/7	10 Pleasant Street, Pittsfield, MA - 01201	413-499-4300	<a href="mailto:jregan@centralberkshire.com">jregan@centralberkshire.com</a>	
CRT Cabulance	disabled, senior, medical	County Wide	24/7	18 Oak Street, Pittsfield, MA 01201	413-447-3800	<a href="mailto:jregan@centralberkshire.com">jregan@centralberkshire.com</a>	
E-Pod Transportation LLP	masshealth recipients	County Wide and to Springfield	Mon-Fri 5am-7pm, Sat-Sun 5am-3pm	858 Curran Highway, North Adams, MA - 01247	413-743-3763	<a href="mailto:PeterGreenbush@gmail.com">PeterGreenbush@gmail.com</a>	
MassHealth Transportation Program (Medicaid Transportation)	medical	County Wide	Mon-Fri 8am-5pm	600 Washington St, Boston, MA - 02111	1-800-841-2900 TTY for hard of hearing 1-800-497-4648		<a href="https://www.mass.gov/info-details/get-a-ride-to-masshealth-medical-appointments">https://www.mass.gov/info-details/get-a-ride-to-masshealth-medical-appointments</a>
Northern Berkshire EMS/Transport	general, medical	County Wide and to Springfield	24/7, Van Service 6am-6pm	10 Harris Street, North Adams, MA - 01247	413-664-4933	<a href="mailto:jmeamey@northadamsambulance.com">jmeamey@northadamsambulance.com</a>	<a href="http://www.northadamsambulance.com/">http://www.northadamsambulance.com/</a>

### TRANSPORTATION EXCLUSIVELY FOR SENIORS AND DISABLED

Provider	Rider Eligibility	Service Area	Days/Hours of Service	Provider Address	Phone	Email	Website
Ad Lib	disabled	County Wide	Mon-Fri 8am-12pm	215 North Street, Pittsfield, MA - 01201	413-442-7047	<a href="mailto:adlib@adlibcil.org">adlib@adlibcil.org</a>	<a href="http://www.adlibcil.org">http://www.adlibcil.org</a>
BRTA	disabled (by application)	County Wide	Mon-Fri 5:20am-7:30pm; Sat 7:20am-7:15pm	1 Columbus Avenue, Pittsfield, MA - 01201	413-499-2782	<a href="mailto:Robert.malnati@berkshirerta.com">Robert.malnati@berkshirerta.com</a>	<a href="http://www.berkshirerta.com">www.berkshirerta.com</a>
BC-ARC	disabled	Central & South County	24/7, office hours: Mon-Fri 8am-5pm	395 South Street, Pittsfield, MA - 01201	413-499-4241	<a href="mailto:bcarc@bcarc.org">bcarc@bcarc.org</a>	<a href="http://www.bcarc.org">www.bcarc.org</a>
COA - Adams	senior & disabled, general, medical	North County	Mon-Fri, 8am-4pm	3 Hoosac Street, Adams, MA - 01220	413-743-8333	<a href="mailto:bproper@town.adams.ma.us">bproper@town.adams.ma.us</a>	<a href="https://www.town.adams.ma.us/council-aging">https://www.town.adams.ma.us/council-aging</a>
COA - Adams	Seniors in Adams and Cheshire	Long Distance Medical	24/7 - upon volunteer availability	3 Hoosac Street, Adams, MA - 01220	413-743-8333	<a href="mailto:bproper@town.adams.ma.us">bproper@town.adams.ma.us</a>	<a href="https://www.town.adams.ma.us/council-aging">https://www.town.adams.ma.us/council-aging</a>
COA - Cheshire	senior & disabled, medical	North County	Mon, Tue, Thur 8am-4pm	119 School Street, Cheshire, MA - 01225	413-743-9179	<a href="mailto:coa@cheshire-ma.gov">coa@cheshire-ma.gov</a>	<a href="https://www.cheshire-ma.gov/council-aging">https://www.cheshire-ma.gov/council-aging</a>
COA - Clarksburg	able bodied, all purposes	North County	on call	712 West Cross Road, Clarksburg, MA - 01247	413-663-8253	<a href="mailto:norcross@bcn.net">norcross@bcn.net</a>	<a href="https://clarksburgseniorcenter.org/">https://clarksburgseniorcenter.org/</a>





**Berkshire County Transportation Guide**  
**Berkshires without Barriers**  
 Berkshire County, MA (December 2022)



**TRANSPORTATION EXCLUSIVELY FOR SENIORS AND DISABLED**

Provider	Rider Eligibility	Service Area	Days/Hours of Service	Provider Address	Phone	Email	Website
COA - Dalton	senior & disabled, all purposes	Dalton, Pittsfield	Mon-Fri 8am-3pm	40 Field Street Extension, Dalton, MA - 01226	413-684-2000	<a href="mailto:KPizzi@dalton-ma.gov">KPizzi@dalton-ma.gov</a>	<a href="https://dalton-ma.gov/council-on-aging/">https://dalton-ma.gov/council-on-aging/</a>
COA - Egremont	senior & disabled, all purposes	South County	Mon-Fri, 8am-4pm	171 Egremont Plain Road, Egremont, MA - 01258	413-528-0182, Ext. 25	<a href="mailto:transpdepart@egremont-ma.gov">transpdepart@egremont-ma.gov</a>	<a href="https://www.egremont-ma.gov/185/Council-on-Aging">https://www.egremont-ma.gov/185/Council-on-Aging</a>
COA - Great Barrington	senior & disabled, all purposes	South County	Mon-Fri, 8am-4pm	917 Main Street, Great Barrington, MA - 01230	413-528-1881	<a href="mailto:Pmann@Townofgb.org">Pmann@Townofgb.org</a>	<a href="https://www.townofgb.org/council-aging">https://www.townofgb.org/council-aging</a>
COA - Lanesborough	senior & disabled, medical	Central County	Mon-Thur 8am-4pm	83 N Main Street, Lanesborough, MA - 01237	413-448-2682	<a href="mailto:lgayle@lanesborough-ma.gov">lgayle@lanesborough-ma.gov</a>	<a href="https://www.lanesborough-ma.gov/departments/council_on_aging/transportation_services.php">https://www.lanesborough-ma.gov/departments/council_on_aging/transportation_services.php</a>
COA - Lee	senior & disabled, medical	Pittsfield, Gt Barrington, Lee & Lenox	Mon-Thur 9am-1:00pm	21 Crossway Street #2, Lee, MA - 01238	413-243-5545	<a href="mailto:coa@town.lee.ma.us">coa@town.lee.ma.us</a>	<a href="https://www.lee.ma.us/senior-services">https://www.lee.ma.us/senior-services</a>
COA - Lenox	senior & disabled, medical	Lenox, Lee & Pittsfield	Mon-Fri 8:00am-3:30pm	65 Walker Street, Lenox, MA - 01240	413-637-5535	<a href="mailto:jennyvanasse@townoflenox.com">jennyvanasse@townoflenox.com</a>	<a href="https://www.townoflenox.com/council-aging">https://www.townoflenox.com/council-aging</a>
COA - North Adams	senior & disabled, medical	North County	Mon-Fri 8am-4pm	116 Ashland Street, North Adams, MA - 01247	413-662-3125	<a href="mailto:spitzer_center@northadams-ma.gov">spitzer_center@northadams-ma.gov</a>	<a href="http://www.northadams-ma.gov/index.php?nav_id=25">http://www.northadams-ma.gov/index.php?nav_id=25</a>
COA - Pittsfield	senior & disabled, medical	Central County	Mon-Fri 9:30am-2:30pm	330 North Street, Pittsfield, MA - 01201	413-499-9346	<a href="mailto:iclark@pittsfieldch.com">iclark@pittsfieldch.com</a>	<a href="https://www.cityofpittsfield.org/departments/council_on_aging/index.php">https://www.cityofpittsfield.org/departments/council_on_aging/index.php</a>
COA - Richmond	senior & disabled	County Wide	Mon-Fri 9am-6pm or on call	1529 State Road, Richmond, MA - 01254	413-441-1106	<a href="mailto:coa@richmondma.org">coa@richmondma.org</a>	<a href="https://www.richmondma.org/government/boards_and_commissions/council_on_aging.php">https://www.richmondma.org/government/boards_and_commissions/council_on_aging.php</a>
COA - Savoy	senior & disabled, medical	North County	7 days, on call	720 Main Road, Savoy, MA - 01256	413-743-4290, 413-743-2542		<a href="https://mcoonline.com/user-profile/savoycoa/">https://mcoonline.com/user-profile/savoycoa/</a>
COA - Sheffield	senior & disabled	South County	Mon-Fri 9am-4pm	25 Cook Road, Sheffield, MA - 01257	413-229-7037, TTY (Relay Service): 1-800-439-2370	<a href="mailto:kloring@sheffieldma.gov">kloring@sheffieldma.gov</a>	<a href="https://www.sheffieldma.gov/council-aging">https://www.sheffieldma.gov/council-aging</a>
COA - Stockbridge	senior & disabled, all purposes	South County; Pittsfield	Mon-Fri 8am-4pm	50 Main Street, Stockbridge, MA - 01262	413-298-4170, ext 250	<a href="mailto:coa@stockbridge-ma.gov">coa@stockbridge-ma.gov</a>	<a href="https://stockbridge-ma.gov/town-offices/">https://stockbridge-ma.gov/town-offices/</a>
COA - Tyringham	senior, medical	South County		P.O. Box 374, Tyringham, MA - 01264	413-243-1749, 1-800-544-5242		<a href="https://www.tyringham-ma.gov/council-aging/pages/transportation">https://www.tyringham-ma.gov/council-aging/pages/transportation</a>
COA - Washington	senior, able bodied	Central County		8 Summit Hill Road, Washington, MA - 01223	413-349-0003	<a href="mailto:washingtoncoa@gmail.com">washingtoncoa@gmail.com</a>	<a href="https://www.washington-ma.gov/council-aging">https://www.washington-ma.gov/council-aging</a>
COA - West Stockbridge	senior & disabled, all purposes	Central & South County	on call	21 Albany Road, West Stockbridge, MA - 01266	413-232-0137, 413-441-1106		<a href="https://www.weststockbridge-ma.gov/council-aging/pages/coa-van-appointments">https://www.weststockbridge-ma.gov/council-aging/pages/coa-van-appointments</a>
COA - Williamstown	senior & disabled, all purposes	North County	Mon-Fri 8:30am-4:30pm	118 Church Street, Williamstown, MA - 01267	413-458-8250	<a href="mailto:nbeverly@williamstownma.gov">nbeverly@williamstownma.gov</a>	<a href="https://williamstownma.gov/council-on-aging/">https://williamstownma.gov/council-on-aging/</a>
COA - Windsor	able bodied elderly, all purposes	Central County	7 days, on call	1890 Route 9, Windsor, MA - 01270	413-684-3811, 413-329-4364	<a href="mailto:buovmasjessica@gmail.com">buovmasjessica@gmail.com</a>	<a href="https://www.windsormass.com/boards-departments/council-on-aging">https://www.windsormass.com/boards-departments/council-on-aging</a>
Elder Services Inc.	senior, medical, shopping	County Wide	Mon-Fri 8am-5pm	877 South Street, Pittsfield, MA - 01201	413-499-0524	<a href="mailto:esbc@esbc.org">esbc@esbc.org</a>	<a href="http://www.esbc.org">www.esbc.org</a>
Mass Rehabilitation Commission	disabled, employment	County Wide	Mon-Fri 8:45am-5pm	160 North Street, Suite 201, Pittsfield, MA - 01201	413-499-2720		<a href="https://www.mass.gov/locations/mrc-pittsfield">https://www.mass.gov/locations/mrc-pittsfield</a>
United Cerebral Palsy of Berkshire County	disabled	County Wide	Mon-Fri, 8:30am-4:30pm	208 West Street, Pittsfield, MA - 01201	413-442-1562		<a href="http://www.ucpberkshire.org/">http://www.ucpberkshire.org/</a>



**Berkshire County Transportation Guide**  
**Berkshires without Barriers**  
 Berkshire County, MA (December 2022)



**TRANSPORTATION FOR VETERANS**

Provider	Rider Eligibility	Service Area	Days/Hours of Service	Provider Address	Phone	Email	Website
Soldier On, Inc.	senior & disabled Vets, medical	County Wide	Mon-Fri 8am-5pm	290 Merrill Road, Pittsfield, MA - 01201	413-418-4300	<a href="mailto:info@wesoldieron.org">info@wesoldieron.org</a>	<a href="https://veteranfamilyride.com/">https://veteranfamilyride.com/</a>

**TAXIS, LIMOS & OTHER SERVICES**

Provider	Rider Eligibility	Service Area	Days/Hours of Service	Provider Address	Phone	Email	Website
Abbott's Limousine & Livery	general public - able bodied	County Wide	24/7	435 Greylock Street, Lee, MA - 01238	413-243-1645	<a href="mailto:info@abbottslimo.com">info@abbottslimo.com</a>	<a href="http://abbottslimo.com">http://abbottslimo.com</a>
Berkshire Shuttle	general public	County Wide	24/7	164 Greenridge Drive, Dalton, MA - 01226	413-247-3839 Ext. 102	<a href="mailto:contact@berkshireshuttle.com">contact@berkshireshuttle.com</a>	<a href="http://www.berkshireshuttle.com">www.berkshireshuttle.com</a>
Bianco's Limousine and Livery Service	general public	County Wide	24/7	449 Pittsfield Road, Suite 201, Lenox, MA - 01240	413-446-4005	<a href="mailto:transport@biancoslimousineandliveryservice.com">transport@biancoslimousineandliveryservice.com</a>	<a href="https://biancoslimousineandliveryservice.com/">https://biancoslimousineandliveryservice.com/</a>
County Rainbow Taxi, Inc/ Arrow taxi	general public, able bodied, medical	County Wide	24/7	10 Pleasant Street, Pittsfield, MA - 01201	413-499-4300	<a href="mailto:iregan@centralberkshire.com">iregan@centralberkshire.com</a>	
DuFour Escorted Tours	general, charter, school	County Wide	School bus and limo charters	133 South Street, Hinsdale, MA - 01235	413-655-8122		<a href="http://www.dufourtours.com">www.dufourtours.com</a>
OTT Taxi	general public	North County	Sun-Wed 5am-1am; Thu-Sat 5am-2am	104 River Street, North Adams, MA - 01247	413-663-3838		<a href="https://ott.taxi/">https://ott.taxi/</a>
Pittsfield YMCA	able bodied	Central County	Transportation provided for camps, childcare	292 North Street # 1, Pittsfield, MA - 01201	413-499-7650		<a href="https://bfymca.org/">https://bfymca.org/</a>
Retired Senior Volunteer Program (RSVP)	senior, able bodied	Central County	Mon-Thu 8:30am-3:00pm; Fri 8:30am-2:00pm	16 Bartlett Avenue, Pittsfield, MA - 01201	413-499-9345	<a href="mailto:rsvpdspatcher@pittsfieldch.com">rsvpdspatcher@pittsfieldch.com</a>	<a href="https://www.cityofpittsfield.org/departments/rsvp/van_transportation.php">https://www.cityofpittsfield.org/departments/rsvp/van_transportation.php</a>
Rose & Cole's Co-op Transportation	general	County Wide	7 days, 5am-midnight	117 Fenn Street, Pittsfield, MA - 01201	413-345-2354	<a href="mailto:rc.coopdelivery@gmail.com">rc.coopdelivery@gmail.com</a>	<a href="https://www.co-optransportpittsfield.com/">https://www.co-optransportpittsfield.com/</a>
RJ's Taxi	general	North County	24/7	429 Curran Highway, North Adams, MA - 01247	413-346-4907		<a href="https://www.facebook.com/ritaxinorthadams">https://www.facebook.com/ritaxinorthadams</a>
Transport the People, Inc.	general	County Wide	24/7	18 Oak Street, Pittsfield, MA - 01201	1-800-639-9605	<a href="mailto:TTP@centralberkshire.com">TTP@centralberkshire.com</a>	<a href="http://www.ttplimos.com">www.ttplimos.com</a>